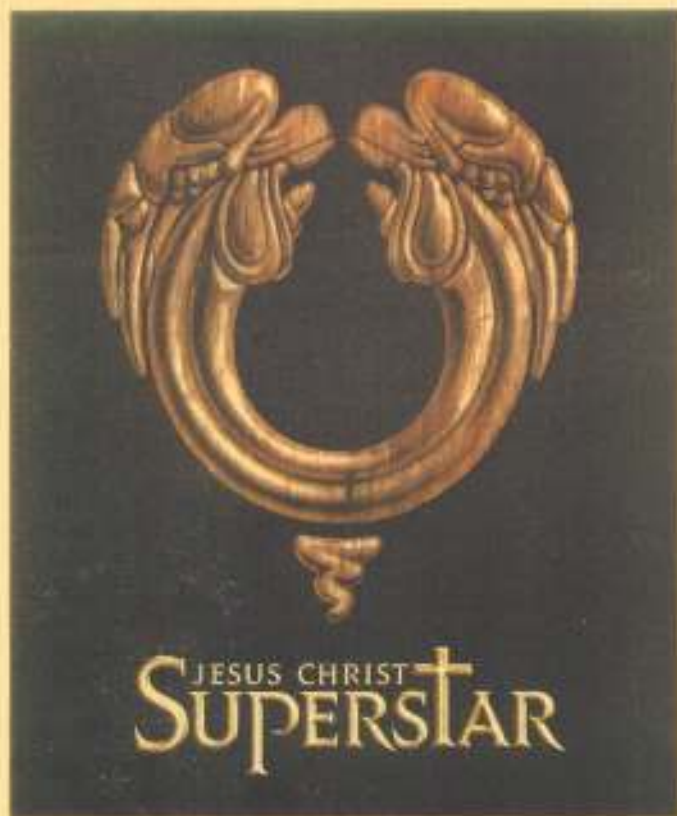


MBCC Theatre Board and Mariners
Present

Jesus Christ Superstar



©1985 MBCC The Handy Useful Group Limited

Lyrics by
Tim Rice

Music by
Andrew Lloyd Webber

Dedication

With the recent passing of Helen Grossman, we wish to highlight the important contributions that she, her husband Glenn, and Adrian Brown (both also deceased) made to MBCC Theatre. Indeed, these talented people created the genesis of our program in the 1950's with a series of original musicals designed for non-professional groups such as our own. That they turned out so well demonstrated the interest and capability of our multi-faceted congregation for such activity; and, encouraged by this tenet, MBCC has continued to support, expand, and introduce new theatre programs over the years for all age groups.....children and youth, in addition to adults. We continue to upgrade our facility, and consider the opportunity for theatrical involvement to be a part of our overall community outreach work, as well as in the life of the church.

But for the moment, let us pay homage to those from the era of whence we came. Helen, Glenn and Adrian perhaps knew not what they did; but we do.



*Manhattan Beach Community Church
Community Hall Theater
303 South Peck Ave, Manhattan Beach
(310) 372-3587*

The MBCC Theatre Board
and Mariners
present

Jesus Christ Superstar

Lyrics by Tim Rice
Music by Andrew Lloyd Webber

Directed by: Randall Schwalbe
Produced by: Lyle and Pauline Stoltenberg

March 15-17; March 22-24, 2002

"JESUS CHRIST SUPERSTAR is presented through exclusive arrangement with The Rodgers & Hammerstein Theatre Library, 229 West 28th Street, 11th floor, New York, New York 10001 and The Really Useful Group Limited."

A Message from the Senior Minister

As you might imagine, a member of the clergy may be fascinated by a production of *Jesus Christ Superstar* in his own church theatre. The word "fascination" is probably a good one! This Andrew Lloyd Webber musical is a tremendous challenge for any theatre group, amateur or professional. Having seen a number of different productions of the show, I am as anxious as you, the audience, to see how our time-honored and talented theatre group will step up to the challenge of this daunting, dramatic task. Each "Jesus Christ Superstar" is unique, and I am sure that what you will witness at the MBCC Theatre will fall into that category, embracing immense innovations and creativity which will guide this unusual musical as it unfolds before you.

Personally, I am excited and hope you will be! I know it will be an unforgettable theatrical happening in the storied tradition of high drama here on Peck Avenue. Thank you for being here and sharing with us in this moment of dramatic expectation and inspiration. And thanks, too, to all those who have labored long and hard to make this, another sterling chapter in a much greater book entitled, "Music and Drama at the Community Church" spanning well over thirty years.

Sincerely,

John R. Calhoun



Director Randall Schwalbe

Jesus Christ Superstar is Randall's debut as director here at MBCC. As he is tonight, Randall was the orchestra conductor for MBCC's *My Fair Lady* in the Fall of 2000. (He has also done time in the trombone section.) Randall celebrated his 20th anniversary last year directing The Notables, a vocal ensemble based in El Segundo. A graduate of the UCLA School of Music, Randall served as the band director at Los Altos High School, conducted and played in many Southern California musical theatres, orchestras, and his own trombone quartet. In his spare time, he preaches lean thinking at Boeing Satellite Systems and, with his wife Mary, steals away to their cottage "The Swallow's Nest" in Cambria.



A Word from the Director

The Greatest Story Ever Told. This phrase may be construed as a reference to the 1965 film, however, it is the epigraph of the Passion itself. The drama in this story has unsurpassed depth and magnitude, subsequently, interpretations of the *New Testament* abound in various media. Webber and Rice, in an early corroboration, took on the challenge to set this story as a rock opera, referencing scripture from Fulton Sheen's *Life of Christ* and "any Bible (we) could find."

This piece has intrigued me for nearly thirty years, and now, through the graciousness of MBCC Theatre and the talent of this cast, crew and orchestra, I can now make a dream come true—to fully explore the depths of this extraordinary event that transcends the gulf of almost twenty centuries. As we recreate the Passion, you will witness our interpretation of the conflicts, love-hate relations, and most important, attitudes—the stuff of which history is made. Through it all, my aim is to allow you to explore your spirituality and your relationship with Christ, just as those who knew Him tried so desperately to do by asking the most perplexing question at that time about Jesus: Is He man or God?

Randall Schwalbe



Associate Directors Charlie and Sally Stowe

Well, the Stowes have come full circle. They first became associated with MBCC show biz in the late 1950's as behind-the-scenes groupies.....he as an obscure trombone player and she as an all-purpose gofer. In the ensuing years they worked their way up the theatrical food chain to assume directorial responsibilities, and even made stage appearances on occasion. But as our minister John Calhoun observes, "MBCC theatre is a place where a performer can come in as a star and leave as an unknown." The Stowes have once again sunk into the obscurity from whence they came—he back to the pit and she mixing paint. There's an upside though, they sleep better.

Consultant, Lyn Coulter

Lyn brings a wealth of experience to the stage by longevity alone. This production is her twenty-third involvement with MBCC Presents in various forms of artistic contributions. In reflection she is most proud of directing *Anything Goes* and co-directing *My Fair Lady*, playing the leading lady in both *Applause* and *How to Succeed*, character parts in *Steel Magnolias*, *Follies* and *Music Man*, and a meaningful portrayal in *Quilters*. Her love of choreography was highlighted in *King and I*, "Steam Heat" in *Pajama Game* and working with the guys in *Guys and Dolls*. The kaleidoscope of costumes over the years has caused her closets to swell, and she's on a first name basis at the local thrift stores (and cheerfully accepts the senior discount), but don't you let her fool you.....she loves it!





Producers Lyle and Pauline Stoltenberg

Lyle and Pauline Stoltenberg feel that it is a privilege to be part of MBCC's spring musical, *Jesus Christ Superstar*. The opportunity to work with our director Randall Schwalbe, our long-time friends and Directors, Charlie and Sally Stowe, and of course, our fabulous Costume Designer Lyn Coulter, was irresistible. So it was "one more time" and as always, this is the best show we've ever been part of. (Yes, we know, we always say that.) As Chairperson of MBCC's Theatre Board, Pauline would like to say a special "thank you" to our wonderful cast and crew who have devoted so many hours to the success of our production.

A MESSAGE FROM THE THEATRE BOARD

We are pleased to welcome you to another exciting musical performance in our Community Hall Theatre. The production of *Jesus Christ Superstar* continues MBCC's nearly 50-year history of entertainment in the Community.

We are very appreciative of our director, Randall Schwalbe, who is directing the cast, chorus, and orchestra, for his expertise and dedication to this production. Working with him is Charlie and Sally Stowe who have directed shows on our stage for over 40 years; Lyn Coulter, Costume Designer, Consultant, performer, who has starred on our stage and been an active participant for many years, and Lyle and Pauline Stoltenberg as Producers. This production includes 39 cast members, an orchestra of 25 and a staff of 60+ working behind the scenes.

The Theatre Board is co-sponsoring this show with the Mariners, an organization of married couples seeking good times, friends, fellowship and service within the church. This joint sponsorship provides us with stronger, broader resources to bring you better Theatre productions.

We welcome you to our Community Hall Theatre, and if this is your first time, we hope that you will return as others have. Thank you for joining our ever-expanding Theatre Family.

Pauline Stoltenberg
Chairperson, MBCC Theatre Board

SYNOPSIS OF SCENES

ACT ONE

- | | | |
|-----------|--|---|
| Scene 1: | JERUSELEM
"Overture" | |
| Scene 2: | JUDAS' LAMENT
"Heaven On Their Minds" | Judas |
| Scene 3: | SATURDAY AFTERNOON
"What's The Buzz"
"Strange Thing, Mystifying" | Jesus, Mary, Followers
Judas, Jesus, Followers |
| Scene 4: | ENCOUNTER WITH CAIAPHAS
"We Are Decided" | Annas, Caiaphas |
| Scene 5: | SATURDAY EVENING
"Everything's Alright" | Mary, Judas, Jesus, Followers |
| Scene 6: | THE CONSPIRACY
"This Jesus Must Die" | Caiaphas, Priests |
| Scene 7: | ENTRANCE TO JERUSELEM
"Hosanna"
"Simon Zealote"
"Poor Jerusalem" | Followers, Children, Caiaphas, Jesus
Simon, Followers
Jesus |
| Scene 8: | THE PALACE: GOVERNOR'S CHAMBERS
"Pilate's Dream" | Pilate |
| Scene 9: | THE TEMPLE
"Roll On Up" | Merchants, Jesus |
| Scene 10: | ENCOUNTER WITH LEPERS
"See My Eyes" | Lepers |
| Scene 11: | MARY'S LAMENT
"Everything's Alright" (reprise)
"I Don't Know How to Love Him" | Mary, Jesus
Mary |
| Scene 12: | ENCOUNTER WITH PHARISEES
"Damned For All Time"
"Blood Money" | Judas
Annas, Caiaphas, Judas |

INTERMISSION

ACT TWO

Scene 1:	THE GARDEN OF GETHSEMENE "Last Supper"	Apostles, Jesus, Judas
Scene 2:	JESUS' LAMENT "Gethsemene"	Jesus
Scene 3:	TRIAL BEFORE CAIAPHAS "The Arrest"	Judas, Jesus, Peter, Apostles Reporters, Crowd
	"The Accusation"	Caiaphas, Jesus, Annas, Crowd
Scene 4:	ENCOUNTER WITH PEASANTS "Peter's Denial"	Peasants, Peter, Mary
Scene 5:	TRIAL BEFORE PILATE "Pilate and Christ"	Pilate, Jesus, Crowd
Scene 6:	TRIAL BEFORE HEROD "Herod's Song"	Herod
Scene 7:	MARTHA'S LAMENT "Could We Start Again, Please?"	Martha, Peter, Followers
Scene 8:	ENCOUNTER WITH PHARISEES "Judas' Death"	Judas, Annas, Caiaphas
Scene 9:	2ND TRIAL BEFORE PILATE "Trial by Pilate"	Pilate, Jesus, Crowd
Scene 10:	JUDAS! "Superstar"	Judas, Soul Sisters, Angelic Choir
Scene 11:	THE CRUCIFIXION "Crucifixion" "John 19:21"	

CAST

JESUS.....	Gary Crandall
JUDAS.....	Roy Okida
MARY.....	Tamisha Nakamoto
MARTHA.....	Kriss Light
SIMON.....	K.C. Campbell
PETER.....	Michael Tushaus
CAIAPHAS.....	Don Norton
ANNAS.....	Jerry Bennett
PILATE.....	Steve DeForest
HEROD.....	Rick Hefner



Mike Spencer
Chauncy Robertson

APOSTLES
Steve Campbell
Sam Hitchcock
Patrick Alsup

Pat Johnson
Ed Fletcher

JESUS

Gary Crandall

This is Gary Crandall's inaugural performance with the MBCC Theatre productions.

Gary has played various roles and performed in scenes from *Les Miserables*, *Phantom of the Opera* and other musicals. Gary helped put himself through college by traveling throughout the Western States playing in rock and roll bands. In *Superstar* Gary takes the responsibility of portraying Jesus very seriously and would like to add his personal witness to the divinity of Christ.



JUDAS

Roy Okida

Roy is excited to be playing the role of Judas in this production of *Jesus Christ Superstar*. His theatre credits include the Pharaoh in *Joseph...*, Chino in *West Side Story*, Manny Munoz in *City of Angels*, and Che in *Evita*. When not involved in theatrical production, Roy performs with The Notables, the "not just another pretty choir" vocal troupe. He wishes to acknowledge Gary Imhoff and the Beverly Hills Playhouse for providing invaluable training in musical theatre, and Marvellee Cariaga for developing his voice. Roy would also like to thank Pauline, Lyn, Charlie, Sally, and Randy for the opportunity to play this once-in-a-lifetime role. Above all, Roy sends all his love to his beautiful wife, Colleen.

Tamisha Nakamoto

MARY



Tamisha made her debut on the MBCC stage as a Sugar Plum Fairy in *The Nutcracker* at the age of 8. She soon turned in the dancing shoes and joined the ranks of vocalists in other MBCC productions and revues such as *Godspell*, *Joseph and the Amazing Technicolor Dreamcoat*, *The Sound of Music*, and *Follies*. A graduate of the Los Angeles County High School for the Arts, Tamisha majored in voice and studied various styles of music including Gospel, Jazz, Madrigals and Musical Theatre. Other credits include *The Best of Broadway*, Purcell's *Dido and Aeneas* and regional performances at Disneyland and the Monterey Jazz Festival. Tamisha would like to thank her family and friends for their unending support (I couldn't have done this without you!) and much love to Aaron, Bucu and Winston.

Michael Tushaus

PETER

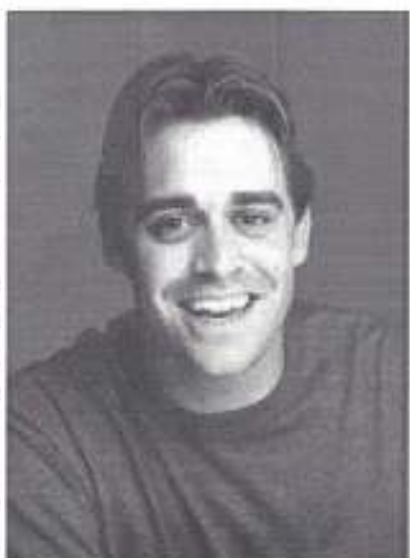


This is Michael's first production at MBCC. Prior to playing Peter, he spent some time on the FOX series, *Boston Public*. Michael is new to the South Bay and hails from Nebraska, where he spent a great deal of time in the theatre. He received his B.A. in Theatre and Music from Hastings College. During that time, he landed a part in *To Wong Foo, Thanks for Everything, Julie Newmar*, where he played alongside Michael Vartan (ABC's *Alias*) as a Rude Boy. He was a long-term member of the Star City Theatre in Lincoln, Nebraska where he acted, music-directed, designed, served as technical director, and even directed many productions including *Jesus Christ Superstar*. Other roles include Finch in *How to Succeed... Jamie Lockhart* in *The Robber Bridegroom* and Nick in *Who's Afraid of Virginia Woolf?* He is happy to be a part of this very captivating and inspiring production.

SIMON

K.C. Campbell

K.C. Campbell is a lifelong Manhattan Beach native and Manhattan Beach Community Church member. He graduated from Mira Costa in '96 where you may remember him as Conrad Birdie in *Bye Bye Birdie*. He escaped to CU-Boulder where he received his B.A. in Communication in 2000. During his free time, he was an on-air disc jockey at KVCU-Boulder, acted in student films and in theatre. KC is thrilled to be back in LA pursuing his lifelong dream of being an actor. He enjoys working as a mobile DJ in his free time, surfing, playing the guitar and piano, and singing cover tunes. KC is happy to be doing this show with his father, Steve Campbell (Matthew), and hopes that you all have a wonderfully positive experience here today!



MARTHA

Kriss Light

Kriss Light is an accomplished singer-songwriter, with a wide range of vocal styles. She has worked with such luminaries as: The Charlie Daniels Band; Tex Beneke; Asleep at the Wheel; Tommy Newsome and his Orchestra; Buddy Arnold and his All-Stars; and Byron Berline. She currently works in the Los Angeles area with her band the Samurai Homeboys. Some of her theatre roles include: the Mother in *Amahl and the Night Visitors*, 'Reno Sweeny' in *Anything Goes*, and 'Babe' in *The Pajama Game*. Kriss directed MBCC Theatre's last musical production *My Fair Lady*.



CAIAPHAS

Don Norton

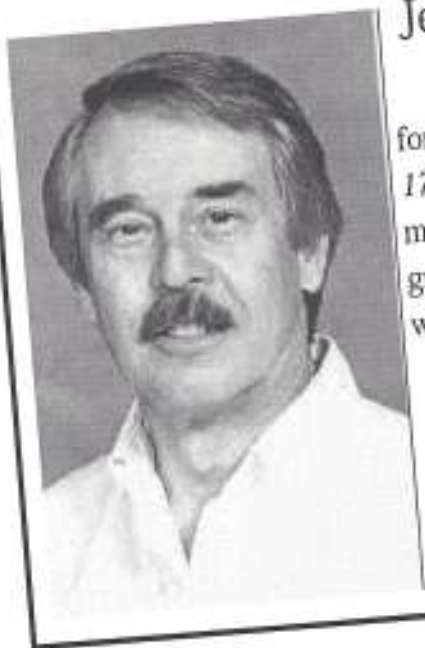
Don hails from Kansas. His musical performing life began at the age 11 as the fox in a school production of Pinocchio. As a young man he performed roles such as *The Student Prince*, *Desert Song*, and *Carousel*. Don sang in the Gilbert and Sullivan Productions at El Camino College. In Richard Sheldon's *Opera Ala-carte* production of *The Sorcerer*, he sang the role of *Sir Marmaduke Pointdextre*. As a founding member of the *South Bay Light Opera Society*, he produced and sang in all of its major productions. He played Poohbah in *The Mikado*; The Pirate King in *Pirates of Penzance*; Dick Deadeye in *H.M.S. Pinafore*; Don Alhambra in *Gondoliers*; The Foreman in *Trial by Jury*. He has been a bass soloist with the *Ellis-Orpheus Men's Chorus* and the Riviera United Methodist Church. On the stage and TV he has sung the roles of all three kings in *Amahl and the Night Visitors*. For fun he sang with the *Four Tunetellers Quartet*. At present he is enjoying singing with The Notables. He adds, "I want to thank my wife, Pat, for her support of my singing ventures."



Jerry Bennett

ANNAS

Superstar marks the fourth MBCC production for Jerry having previously done choreography for *1776*, *Follies*, and *My Fair Lady*. He is a long time member of The Notables, a popular South Bay musical group, and is always happy to be back here working with such a wonderful group of people.



PILATE

Steve De Forest



Steve is pleased to be a part of *Superstar* and happily returns to MBCC after appearing as Freddy in last year's production of *My Fair Lady*. Local audiences will recognize him as Benjamin Guggenheim from South Bay Civic's critically acclaimed production of *Titanic*. Most recently, Steve was seen as Emile de Becque in Buena Park Civic's *South Pacific*. Further regional credits include Dr. Craven in *The Secret Garden* (touring company), Miles Gloriosus in *Forum* (SCLO), Dr. Carrasco in *Man of La Mancha* (SCLO) and Captain von Trapp in *Sound of Music* (CCLO). Other favorites: Bill Sykes in *Oliver!*, The Dentist in *Little Shop* and Teen Angel in *Grease*. Film and TV credits include *Return to Innocence*, *Keepin' It Real*, *Up Against Amanda*, *Nine Days to Nowhere*, *In Search Of* and *Dawn of Our Nation*. Much love to my wife, Jill, whose support and understanding makes this all possible. Big hugs to Dane, Lexi and Cole for being great kids! A final thanks to Randall, Lyle, Pauline, our talented cast and crew and, of course, Bob Garrett...my voice guru.



Rick Hefner

HEROD

Rick has been involved with MBCC Theatre for over 15 years. He has had parts in *1776*, *The King & I*, *No Time for Sergeants*, *Alice in Wonderland*, *Sugar*, *The Pajama Game*, *Never Say Good-bye*, *Fools*, *Dear Phoebe*, and many other shows. Behind the scenes, he has served as producer, director, and a member of the MBCC Theatre Board. Although you may have seen Rick in other theatrical productions around the South Bay, his first love is the MBCC stage. Rick dedicates his performance to his supportive wife, daughter, and son (due to make his "entrance" in June!)



GUARDS

Jeff Wallin

Bill Fee

Vic Jeter

J.C. Edwards (Mar 15 only)

MERCHANT

Craig Lomino

PRIESTS

Paul Sterba

Paul Lance

Tony McQuilkin

Scott Sellars



DANCERS

Colleen Peralta

Donna Stogryn

Sue Brennan

Paula Kelley

Kelly McKenna

Monica Farrell



ANGELIC CHORUS

Shelli Brunswick

Maggie Whittemore

Diana Peterson

Jane Wang

Patti Jarvis

Michelle Bishop

Lyn Coulter

Connie Boswell





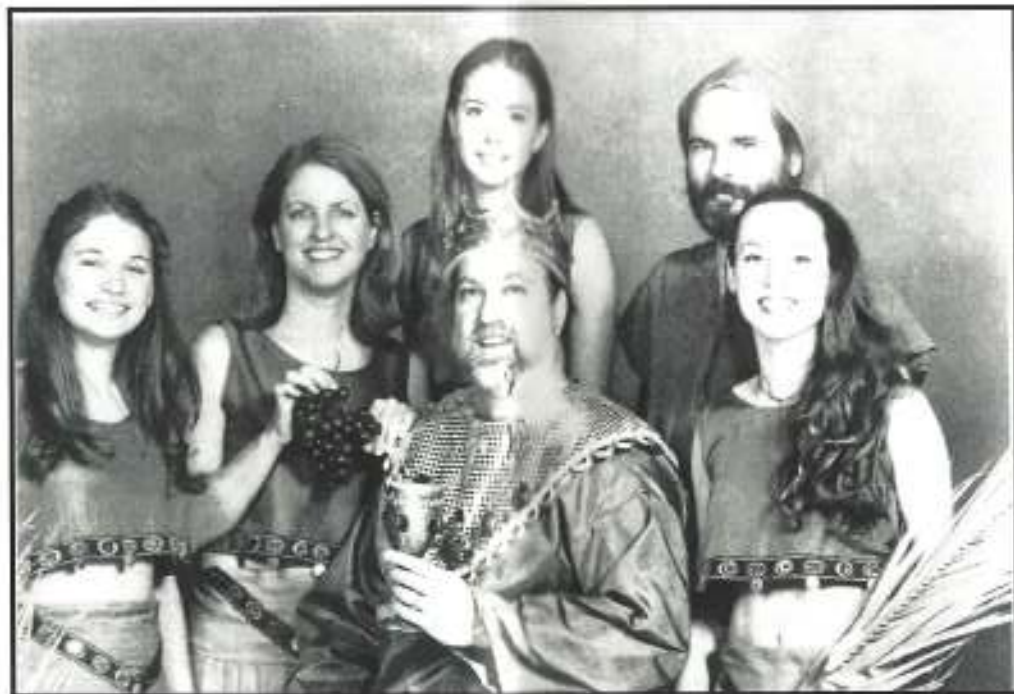
Orchestra
Conductor, **Randall Schwalbz**

Guitar	Karl Grossman Tom Anderson
Bass	Tony Hughes
Piano	Charlie Stowe
Drums	Sandra Nitchman
Aux Perc	Debbie Minnichelli
Flute	Pam Conde
Clarinet	Joanne Davidson
Oboe	Mike Cason
Bassoon	Bill Malcolm, Erika Snow Robinson
Bass Clarinet	Mary Mok
Trumpet	Tom Dufur, Dave Ploen
Trombone	John Dusenberry, Jack Freeman
Horn	Bob Peterson
Violin	Cindy Bandel, Vicki Carr, Jim Heard, Colleen Okida, Ken Retzack, Ellen Woodyard
Viola	Anne Dufur
Cello	Bob Boren





Dana Kopenhefer, Billy Kopenhefer
Shelby Stogryn





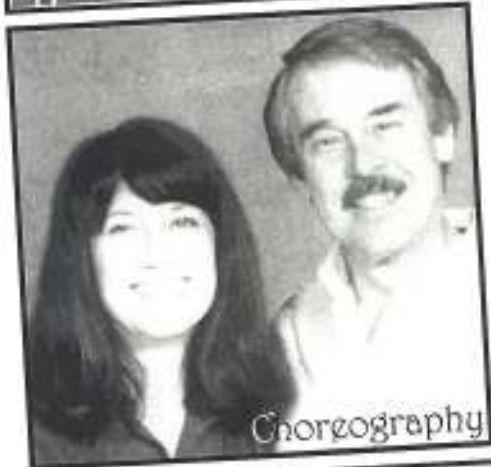
Costumes



Props



Sets



Choreography



Tickets



Make-up
Hair



Publicity

Painters



SALLY PALM—Set Design
 I've been painting sets—or painting something! About as long as I can remember. I do free-lance art work of several kinds; murals, paper art, set design, paintings, etc., and taught art classes for seventeen years at Washington Elementary School. It's been a lot of fun helping with MBCC's marvelous productions, both adult and with the Children's Choir Theater. Heartfelt thanks to all the volunteer painters who have worked so hard on this play; without you, we would have had to settle for two rocks and a vase!

Production



Jim Aldinger is happy to be stage managing his 2nd show at MBCC. His first show was last year's *My Fair Lady*. Jim got involved in theatre here after helping start the Hughes Drama Club where he produced their first two productions *Academia Nuts* and *WHAC Live* at the Palos Verdes Players theatre in Torrance. Jim is also a local councilman and a 2-year member of MBCC.



Program



Light & Sound



Patrons



Special Thanks to:
 Colleen Okida,
 Assistant to
 the director

Jesus Christ Superstar Patrons

Patt and John Ambrose	Jack and Rachel Kelble
The Anderson Family	Louis Kiger
Jim and Evelyn Belt	Mark Klempa
Terri Breitling	Nancy Klosowski
Bob and Mary Ann Brigham	Ron and Rita Koch
Kyle and Sue Brown	Richard and Lisa Kopenhefer
Janet and George Buckley	Ray Lambert
Lori Burns	Craig Lomino
Mrs. Betty Burroughs	John and Linda Mack
Steve and Kathy Campbell	Betty Mallery
Diane and Doug Carter	Gretchen Marble
Neil and Sharon Cascadden	Kathryn May
Evelyn and Frank Cochran	Kurt and Sue Mayo
Michael and Carol Costello	Delme Mc Intyre
Lyn Coulter	Peter Mc Neil
Martha Crommett	Etie Moghissi
Allen and Christine Davis	Jane and Alden Munson
De Forest and Associates	Jone and Bill Osborn
Alan and Candy Duncan	Sally and Noel Palm
J C and Pat Edwards	Cindy and Tod Palm
Richard and Susan Farrell	Ruth Purdon
Barbara Fine	Sylvia and Bob Raban
Delpha and Phil Flad	Lori Sakai
Ann Gere	Russ and Charlie Saunders
Barbara Hammer	Jim and Sara Sellars
Dave and Lynn Harris	Heinie and Doris Shaw
Wendell and Madeline Harter	David and Nancy Starke
Guy and Judy Hatlie	Karol Shrodes
Rick and Sue Hefner	Sue Sterba
Bill and Janet Hodgman	Lyle and Pauline Stoltenberg
Dennis and Sherry Hughes	Charles and Sally Stowe
John and Carole Huginin	Frances Teague
George and Nancy Jackson	Ron and Shelia Troupe
Vic and Bonnie Jeter	Bob and Elaine Weiner
Debbie Jeter	Hugh and Barbara Wells
Doris Louise Johnson	Bob Willett
Jerry and Chris Johnson	Linda Wilson
Ann M. Jones	Olive Ziegler
Robert A. and Carol C. Jones	

"Thank You" to Jan & Rob Barber, Diane & Doug Carter, Sherry Hughes, Carole & John Huginin, Craig Lomino, Lyle & Pauline Stoltenberg, Sue Sterba, for a great job on the Patron Brunch, it could not have happened without you! And a "Special Thank You" to Jan & Rob Barber for the use of their beautiful home for this event.



MBCC Productions
MBCC Community Hall Theater

My Fair Lady—2000
The Odd Couple—1999
Follies—1999
Steel Magnolias—1998
Working—1997
Twelve Angry Men—1995
The First Broadcast—1995
Bells are Ringing—1995
Godspell—1994
Sound of Music—1993
Quilters—1993
The Foreigner—1992
The King & I—1991
1776—1991
Sugar—1990
Fools—1990
Anything Goes—1989
Harvey—1989
Alice in Wonderland—1988
Ten Little Indians—1988

Pajama Game—1987
Oliver! - 1987
Music Man—1986
No Time for Sergeants—1986
Guys and Dolls—1985
You Can't Take It with You 1985
Never Say Goodbye—1984
Carnival—1984
Applause—1983
Godspell—1983
I Do, I Do!—1982
Dear Phoebe—1982
Damn Yankees—1981
Arsenic and Old Lace—1981
Delegate Applegate—1980
Sound of Music—1979
Man of La Mancha—1977
Curious Savage—1976
Geo. Washington Slept Here—1975
The Man Who Came to Dinner—1974
Night of January 16th—1973