

MBCC shipmates present  
the **1986** production



performance dates of—

MEREDITH WILLSON'S

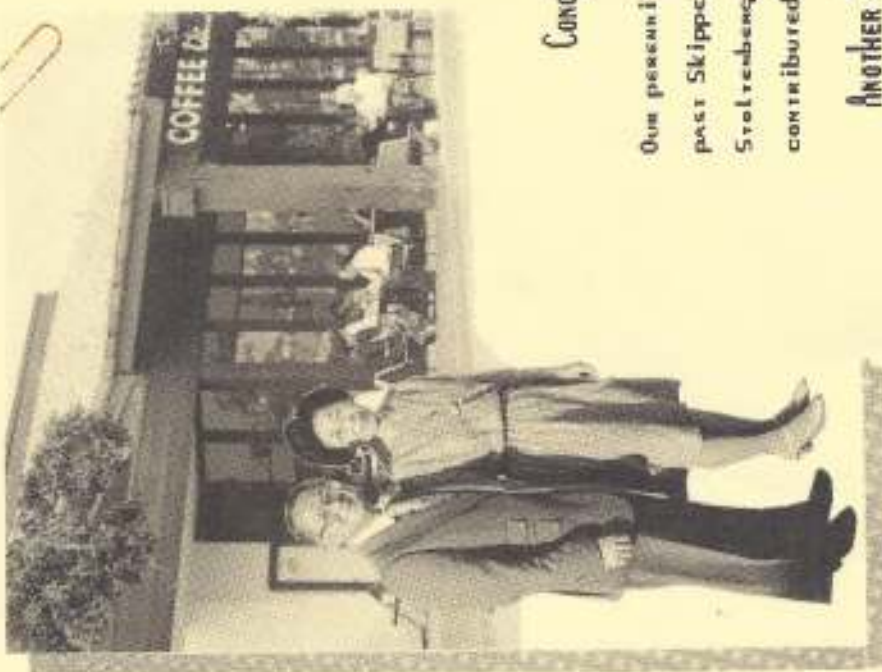
# THE MUSIC MAN

a Musical Comedy



manhattan beach community church 303 s. peck avenue

372-3587



*Kambea*  
INDUSTRIES

CONGRATULATIONS

to  
Our perennial show producers and  
past Skippers, Lyle and Pauline  
Stoltenberg, and all those who  
contributed to Music Man.

ANOTHER SWASHING SUCCESS!

1986

Kam  
Engineering Division \*

Beatrice  
Food Services Division

\* Retired engineers, want to exercise your engineering  
expertise occasionally? CONTACT Kam Hung at  
(213) 372-4533.



MANHATTAN BEACH COMMUNITY CHURCH  
SHIPMATES  
PRESENT

# MUSIC MAN

Books, Music & Lyrics by: MEREDITH WILLSON & FRANKLIN LACEY  
Story by:  
MEREDITH WILLSON

"THE MUSIC MAN"  
is presented through  
special arrangement with  
Music Theatre International  
49 East 52nd Street  
New York, N.Y. 10022



MUSICAL SYNOPSIS OF SCENES

ACT ONE

- SCENE 1 A Railway Coach:  
Morning: July 4, 1912  
ROCK ISLAND . . . . .Charlie Cowell &  
Traveling Salesmen
- SCENE 2: River City, Iowa  
Center of Town.  
Immediately following.  
IOWA STUBBORN . . . Townspeople of River City  
TROUBLE . . . . . Harold and Townspeople
- SCENE 3: The Paroos' House.  
That Evening.  
PIANO LESSON . . . . . Marian, Mrs. Paroo  
Amaryllis  
GOODNIGHT MY SOMEONE . . . . . Marian
- SCENE 4: Madison Gymnasium.  
Thirty minutes later.  
SEVENTY SIX TROMBONES . . Harold, Boys & Girls  
SINCERE . . . . . Olin, Oliver, Ewart, Jacey
- SCENE 5: Exterior of Madison Library.  
Immediately following.  
THE SADDER-BUT-WISER GIRL . . . . . Harold &  
Marcellus  
PICKALITTLE . . . Eulalie, Maud, Ethel, Alma,  
Mrs. Squires, Ladies of River City  
GOODNIGHT LADIES . Olin, Oliver, Ewart, Jacey
- SCENE 6: Interior of Madison Library.  
Immediately following.  
MARIAN THE LIBRARIAN . . Harold, Boys & Girls
- SCENE 7: A Street.  
The following Saturday noon.
- SCENE 8: The Paroos' Porch.  
That evening.  
MY WHITE KNIGHT . . . . . Marian
- SCENE 9: Center of Town.  
Noon, the following Saturday.  
WELLS FARGO WAGON . . Winthrop & Townspeople

ACT TWO

- SCENE 1: Madison Gymnasium.  
The following Tuesday evening.  
IT'S YOU . . . . .Olin, Oliver, Ewart, Jacey,  
Eulalie, Maud, Ethel,  
Alma and Mrs. Squires  
SHIPOOPI . . . . . Marcellus, Harold, Marian,  
Tommy, Zaneeta, and Kids  
PICKALITTLE REPRISE . . Eulalie, Maud, Ethel,  
Alma, Mrs. Squires and Ladies
- SCENE 2: The Hotel Porch.  
The following Wednesday evening.  
LIDA ROSE . . . . . Olin, Oliver, Ewart, Jacey  
WILL I EVER TELL YOU . . . . . Marian
- SCENE 3: The Paroos' Porch.  
Immediately following.  
GARY, INDIANA . . . . . Winthrop
- SCENE 4: The Footbridge.  
Fifteen minutes later.  
IT'S YOU REPRISE . . Townspeople, Boys & Girls  
TILL THERE WAS YOU . . . . .Marian and Harold
- SCENE 5: A Street.  
Immediately following.  
SEVENTY SIX TROMBONES AND  
GOODNIGHT MY SOMEONE . . . Harold and Marian
- SCENE 6: Madison Park.  
A few minutes later.  
TILL THERE WAS YOU REPRISE . . . . . Harold
- SCENE 7: Madison Gymnasium.  
Immediately following.  
FINALE . . . . . Entire Company

Dedication

Doing a show that's fondly remembered for the second time always has its trepidations; will it come off as well as before...can the camaraderie be reconstructed...can the magic be recreated? But for a group such as ours...we are a church congregation that does shows, not a theatre group...there are additional concerns and memories. Several in the original group, who contributed so much to the success of that show, are no longer with us. Each of the folks listed below was an integral part of the esprit of that show, and we wish to dedicate this recreation of "The Music Man" to them. Of particular sadness to us is the tragic deaths of the young people; Zaneeta and Tommy. And it is to them, and their parents, that we add special recognition to tonight's performance.

- Gail Handley - Zaneeta Shinn
- Gordon Harter - Tommy Djilas
- George Cather - Orchestra, Trombone
- Barbara Duncan - Maud Dunlop, Choreography
- Jim Howard - Charlie Cowell
- Wayne Strickley - Oliver Hix
- Voerge Yeager - Townsperson

CAST  
(in order of appearance)

- Salesman . . . . . Tom Bullard, Tom Gates,  
George Hammer, Guy Hatlie,  
Dave Lichty, Eric Schaefer,  
Paul Sterba
- Charlie Cowell . . . . . Vic Jeter
- Conductor . . . . . John Calhoun
- Harold Hill . . . . . Roger Book
- Mayor Shinn . . . . . Steve Campbell
- Ewart Dunlop . . . . . Ron Koch
- Oliver Hix . . . . . John Martin
- Jacey Squires . . . . . Rick Hefner
- Olin Britt . . . . . Sam Hitchcock
- Marcellus Washburn . . . . . Pat Johnson
- Tommy Djilas . . . . . Brian Denny
- Marian Paroo . . . . . Pat Edwards
- Mrs. Paroo . . . . . Ann Gere
- Amaryllis . . . . . Elaine Belt
- Winthrop Paroo . . . . . Steven Edwards
- Eulalie Mackechnie Shinn . . . . . Lyn Coulter
- Zaneeta Shin . . . . . Heidi Thompson
- Genevieve . . . . . Maggie Garcia
- Gracie Shinn . . . . . Kim Hitchcock
- Alma Hix . . . . . Rita Koch
- Maud Dunlop . . . . . Jo Tyler
- Ethel Toffelmier . . . . . Esther Mio
- Mrs. Squires . . . . . Fran Freeman
- Constable Locke . . . . . Guy Hatlie

Townspeople

- Marie Bishop, Diane Carter,  
J. C. Edwards, Susi Farrell, Sally Gates,  
Barbara Hammer, Sandy Hanna, Connie Hefner,  
Marcie Hines, Cora Kenton, Kriss Light Killam,  
Bunny Lewis, Susan Schanz

Wan-Tan-Ye Girls

- Amanda Edwards, Erica Hatlie  
Kim McIntyre, Erin Warner

Kids of River City

- Lara Day, Mindy Carter,  
Monica Farrell, Heather Hitchcock,  
Danny Graham, Brian Russell,  
Angela Thompson



ORCHESTRA

Conducted by Charlie Stowe

Tonight you are listening to the hardcore of MBCC's musician faithfuls. Virtually everyone in the pit has played five or more shows and/or choir related concerts for us, with some, as you will note, having been around longer than they care to admit. Cultivating and nursing a sterling group like this is not easy; the strings fight with the brass, the reeds fight among themselves, and everyone fights with the conductor--who is simply trying to keep them together with whatever inconsequential activity happens to be going on, on-stage. We are fond of hoping that some day we might put on a show without any singers (come to think of it, we've got one tonight) or at least put them in the pit and us on stage; so stay tuned for yet another blow to musical theatre!

Our sincere thanks for the years of dedicated service; and with the completion of this performance, their souls will be officially saved.

VIOLINS

Norma Gass, Concertperson\*  
 Vicki Carr+  
 Carole Ellis+  
 Devon Hall  
 Jim Heard+  
 Ann Lasch+

CELLOS

Ruth Barstow+  
 Gail Matulaitis+  
 Yvonne Tressel+

REEDS

Bob JOHNSON+  
 John Abbott\*  
 Pam-Condert  
 Jerry-Feete\*  
 Susan Richter  
 Mary Mok+

BASS

Bill MALCOLM+  
 Charlie Grossman\*

TRUMPETS

Dave Bradburn\*  
 Tom Dufurt+  
 Mark Myers+

TRUMPONE

Jack Freeman\*  
 Jim Gere\*  
 Mike Calland+

DRUMS

Gary Granger+

PIANO

Evelyn Belt+

BELLS

Erma Lou Cordon\*

TRAIN WHISTLE

Fred Pigue\*

\* Over twenty years service in MBCC productions.

+ Many years service in MBCC productions.

PRODUCTION STAFF

Director . . . . . Sally Stowe  
 Music Director . . . . . Charlie Stowe  
 Vocal Director . . . . . Barbara Hammer  
 Producers . . . . . Lyle & Pauline Stoltenberg  
 Stage Managers . . . . . John & Carole Huguin  
 Set Design . . . . . Sally Palm  
 Prop Coordinators . . . . . Paul & Sue Sterba  
 Costume Coordinator . . . . . Sue Mayo  
 Choreography . . . . . Kathleen Bullard  
 Heidi Thompson  
 DeAnne Johnson  
 Lyn Coulter

Light & Sound Control . . . . . Mike Heary  
 Steve Norris, Donna Zoriki

Spotlight Operators . . . . . Tim Stowe, Terry Wells  
 Make-up Coordinator . . . . . DeAnne Johnson  
 Susan Blackwell-Brown  
 Carol Hitchcock  
 Dulcie Robinett

Rehearsal Pianist . . . . . Evelyn Belt  
 Program . . . . . Pauline Stoltenberg  
 Advertising . . . . . Dorothy Pierson  
 Patrons . . . . . Doris Jensen  
 Publicity . . . . . June Veager  
 Photographer . . . . . Bob Stewart  
 Ticket Sales . . . . . Frank & Evelyn Cochran  
 Auditorium Set-up & Control . . . . . Phil Gingrich  
 Set Construction . . . . . Lyle Stoltenberg  
 Jim Belt, J. C. Edwards  
 Phil Gingrich, Glen Patmore  
 Bob Weiner, Gene Ziegler

Set Painting . . . . . Mindy Carter, Fran Freeman  
 Jack Freeman, Jim Gere  
 Andrea Russell, Brian Russell  
 Susan Schanz, Sally Stowe, Rachel Warner

Video . . . . . Graham Lewis  
 Refreshments . . . . . Shipmates  
 Chairperson . . . . . Paraday Bartos

Acknowledgements

Special thanks to Rudy Charles for his support and artistic talents.

Our thanks to Sue Mayo, Costume Coordinator, for another great job!!

VIC JETER - Charlie Cowell

This is Vic's second production at MBCC and his first musical. He played the "Chief" in last fall's production of You Can't Take it With You" and is now cast as a traveling anvil salesman. Vic has been a member of MBCC for over a year now and looks forward to a long and adventurous stay with us.



ROGER BOOK - "Harold Hill"

Roger has appeared in two other MBCC productions, as "Sky" in "Guys and Dolls," and Tony in "You Can't Take it With You." He is now performing as Harold Hill in "The Music Man" and, that's right, Roger was born and raised in Gary, Indiana and, that's right, he is a traveling salesman. The only difference is that he does know a note or two about music.





● STEVE CAMPBELL - Mayor Shinn

Steve returns to the MBCC stage as the Mayor. Last year he played the out of town heavy in "Guys and Dolls" and before that was the hometown reporter in "The Man Who Came to Dinner." As Vice President of Investments at Paine Webber, he comes from Century City to River City.

..... ★ ★ ★ .....



● JOHN MARTIN - "Oliver Hix"

John returns to the stage at MBCC in a role he thoroughly enjoys - singing Barbershop. In fact, most any kind of music suits him just fine. He was last seen locally as Kasper, one of the three kings in "Amahl and the Night Visitors." His MBCC Presents past experience includes several small parts in "Delegate Applegate." It was in this role he discovered singing and dancing at the same time puts his brain in overload, but that its worth all the drill.

When he is not singing in some choir rehearsal or Sunday service, he keeps body and soul together working in Materiel at Hughes Aircraft Company's Space and Communications Group.



..... ★ ★ ★ .....

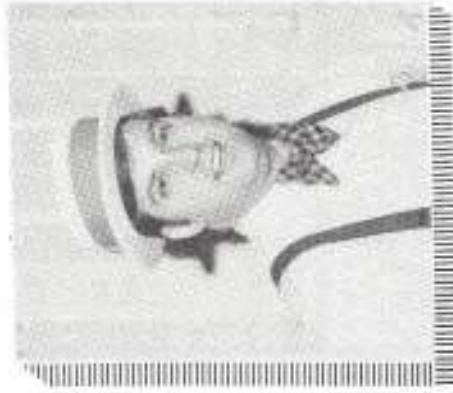
● RON KOCH - Ewart Dunlop

Ron began his career at MBCC working behind the scenes. He has since appeared in "Man of La Mancha," "Delegate Applegate," "Damn Yankees," "Applause," "Guys and Dolls," and "You Can't Take it With You." We are happy Ron made the move to "center stage" and think he is enjoying it too!



● RICK HEFNER - Jacey Squires

Rick continues in a series of MBCC roles involving characters with more bulk than brains -- Rocky in "Dear Phoebe," Cabot Lassiter in "Never Say Goodbye," Samson in "Samson and Delilah," and Nicely-Nicely in "Guys and Dolls." He feels that the part of Jacey is an improvement, since this is the first time his character has kept his girl or wife until the end of the play! Rick's real-life wife, Connie, and he are ex-Skippers of Mariners and sing in the Contemporary Chorale and Senior Choir.







● SAM HITCHCOCK - "Olin Britt"

After working in "Never Say Goodbye," "Carnival," and "Guys and Dolls" as a stagehand and chorus member, Sam stepped out of the shadows as Ed Carmichael in the Mariner production of "You Can't Take it With You." Sam is a member of the Contemporary Chorale and father of a son and two daughters, both of whom are in this musical. His wife, Carol, is doing make-up for the fifth straight MBCC production.



● PAT JOHNSON - "Marcellus Washburn"

Pat has appeared in several past Shipmate productions including "Applause," "Never Say Goodbye," and "Guys and Dolls." He is a member of the Contemporary Chorale and he and his wife, DeAnne, were Mariner Skippers in 1984.



● PAT EDWARDS - Marion Paroo

Pat is a veteran of many MBCC productions, both musicals and plays, including "Curious Savage," "Man of La Mancha," and "Sound of Music." Her most recent role was Sarah in "Guys and Dolls." Pat is the children and adult choir director at MBCC and teaches music in the elementary schools. Perhaps Pat's finest acting moment came during auditions for "The Music Man" when she limped through tryouts on a knee she badly injured in a skiing accident and convinced the Stowes that it wouldn't affect her performance.



● ANN GERE - Mrs. Paroo

After 23 years, I still love this show! From the mayor's wife last time to Mrs. Paroo now...and maybe next time I'll try for Marian! Strangely enough, one son from the '63 cast now lives in Tralee, County Kerry, Ireland (hence, my brogue), and the other is into all kinds of "show biz" activities in Hawaii. Yes, time marches along...and happily so...if we keep using the "think system"!







● STEVEN EDWARDS - Winthrop Paroo

Steven's first exposure to MBCC productions was at age five in the final scene of "Curious Savage." Since then he has been in several children's choir productions and has learned to fix dinner for himself while his parents are at MBCC rehearsals all night. Steven is an avid tennis player, skateboarder, and skier, and plays soccer with the Hurricanes. He is 14 and expects to graduate from Manhattan Beach Intermediate despite missing a few homework assignments during rehearsals.



● LYN COULTER - Eulalie Mackechnie Shinn. Lyn has appeared in almost every MBCC musical, including the original Mariner "Music Man" production. She starred in "Applause" and "How to Succeed," with supporting roles in "Damn Yankees," and most recently, "You Can't Take It With You." She has shared her choreographic abilities over the years, with particular note to the Crapshooters of "Guys and Dolls" and this year's Library scene.

In her "other life" she is mother of five, grandmother of three, and a full-time insurance agent who prefers working as a hobby. Lyn loves sequins, the spotlight, and the Mariner "company."



● JOHN CALHOUN - Conductor

It seems to me, quite frankly, that John Calhoun has finally fulfilled his own prophesy; that an MBCC musical is a medium in which a performer can show up as a star and leave as an unknown. In fact, it seems that John's entire stage career at MBCC can be summarized in such an innocuous manner. You'll notice that when John makes an entrance on stage, it will seem like somebody has just left. But to suggest that John's acting and singing abilities leave something to be desired, would not be entirely accurate. Let us just say that what he lacks in acting ability he more than compensates for with his musical ineptitude.

As conductor of the River City Express, he continues a stage career that spans 40 years. Unfortunately, however, that is not the span between appearances. He will be long unremembered for his role as a witness for the defense in "Night of January 16th," as an off-stage (thankfully) play-by-play announcer in "Damn Yankees," and in a non-speaking role as a moon in "Ahmad and the Night Visitors." But his weekly performances on Sundays at MBCC, where he plays the role of minister, demonstrate his true mastery of the thespian arts.

To paraphrase Tomay Lasorda... "there are three kinds of ministers; those who make things happen, those who watch things happen, and those who wonder what happened." John is fond of encouraging people to seek new beginnings and involvements. Notwithstanding the observation that one who has a lot of new beginnings probably has fouled up a lot of endings, be sure to come and witness this multidimensional master of pulpitry in his true medium. The price is right, and who knows...you, too, could wind up as an unknown on our stage someday.









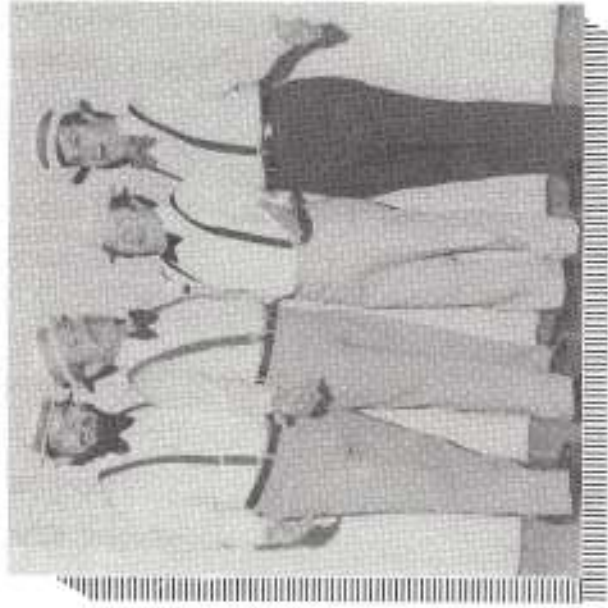
GEORGE & BARBARA HAMMER

★★★★★★



★★★

KIDS OF RIVER CITY



SAM HITCHCOCK, JOHN MARTIN,  
RON KOCH, RICK HEFNER

☆☆



CHOREOGRAPHERS



LYN COULTER  
DeANNE JOHNSON  
HEIDI THOMPSON



● SALLY STOWE - The "Pick-a-Little Lady" personified (as all in cast and crew will attest), 'picked at' just about everyone to perform to their highest capabilities. If the "Hello, Dolly!" lady can't bring out the best in everyone involved, it surely isn't because she doesn't exhort, cajole, mollify, inspire, and hopefully, teach the love of performing to one's greatest potential. Each and every person is an integral cog in the machinery of a musical production. Sally tries to touch each spoke with love and concern.

\*\*\*\*\*

● CHARLIE STOWE - Music Director

..It's deja vu all over again. With due apologies to Yogi Berra, Charlie can't help but recall the circumstances associated with the first MBCC production of "The Music Man" (in 1963). With characteristic modesty he had cast another fellow as Harold Hill, but was then able to get him transferred to Alaska on his job. And guess who came to the rescue, stepped in and played it so masterfully... (there's that modesty again). Since then, however, Charlie has spent most of the shows with the snakes and alligators in the orchestra pit, except for brief on-stage respites in "I Do, I Do," "Never Say Goodbye," and, most recently, "You Can't Take it with You."

The current Harold Hill, Roger, is looking over his shoulder though, and beginning to hear footsteps. Since he is a traveling salesman himself, he knows that it is not inconceivable to be marooned in some inaccessible area during mid-April. Watch the stage carefully tonight, for the trouble might not all be in River City.

\*\*\*\*\*



● LYLE & PAULINE STOLTENBERG - Producers

Lyle and Pauline have kept busy as Producers of "Applause," "Never Say Goodbye," "Guys and Dolls," and now, "The Music Man." As Producers, Lyle gets a lot use out of his special toys (tools) and Pauline pours gallons of coffee and pounds her word processor. They also have a lot of fun working with a very talented and special group of people.

\*\*\*\*\*

● BARBARA HAMMER - Vocal Director

Barbara began her MBCC stage career in the old Mariner shows after finishing her music degrees at USC. This show has a 25 year old memory as she played Mrs. Paroo the last time. Some other roles have been Mother Abbess in "Sound of Music," Mrs. Parrish in "Dear Phoebe," Mrs. Abernathy in "Delegate Applegate," and General Cartwright in "Guys and Dolls." Barbara is a retired teacher and very active in our choir and music program - directing our musicals, vocally for many years.







● JOHN and CAROLE HUGUNIN - Stage Managers

John and Carole started in MBCC productions assisting with scenery in "Never Say Goodbye." They had so much fun they decided to try Prop Management for "Guys and Dolls." They followed this success by becoming Stage Managers for "Carnival" combined with Prop Management. We all appreciate their fast, organized action behind stage, making set changes, moving people, and checking props, sprinkling this with their supportive and unflinching good humor.



● SALLY PALM - Set Design

A fine-arts major in school, Sally kept her hand in painting and drawing while co-producing and raising five children. She is an Exhibiting Member of the Pacific Art Guild, and is also very interested in spinning and weaving fibers, owning two spinning wheels and having made many wall hangings. In the last two years she has completed two large murals on the bandshell in Veteran's Park for the City of Redondo Beach. Sally is presently employed at Washington School, Redondo Beach, where she works with children, kindergarten through 6th grade in Art. In her spare time, she likes to ski with her husband, Noel, and garden (on her own).



● MIKE NEARY - Light & Sound Engineer

Mike is the chief engineer of our sophisticated light and sound systems. He also coordinates the light and sound systems during all performances. He graduated from Clarkson College of Technology in N.Y. with an EE, and has worked at Xerox for 13 years. Mike came to MBCC in 1979 and quickly discovered that this is the place where he can string wires all day without being sent to his room.



**KRIENKE REALTY**

1716 MANHATTAN BEACH BLVD.  
MANHATTAN BEACH, CALIF., 90266  
Phone (213) 376-7967

LOTS  
HOMES  
INVESTMENTS  
COMMERCIAL



★  
*The office staff says—*

CONGRATULATIONS

to THE CAST AND CREW AND ALL  
WHO HELPED WITH THE PRODUCTION



of **THE MUSIC MAN**

OLIVER KRIENKE  
CAROL KRIENKE  
JUDY K. GISS  
KEN GISS





the *slipt* *stitch*  
yarns & needlecraft

421 Main Street  
El Segundo, California  
322-6793

**doug carter**  
PHOTOGRAPHY  
379-6403  
diane carter  
coordinator

commercial ■ weddings ■ parties ■ publicity  
1018 TENTH ST. MANHATTAN BEACH, CALIF. 90268

CARPET AND UPHOLSTERY STEAM CLEANING

★ ★  
RICHARD YODER  
REGISTERED REPRESENTATIVE

AMERICAN PACIFIC SECURITIES CORPORATION  
23717 HAYTHORNE BOULEVARD, SUITE 200 TORRANCE, CALIFORNIA 90505  
213/779-0289 213/773-7301

HILL AND HILL DRAPERIES  
AND CARPETS  
*Cleaning and Sales*

★  
KEN HILL  
PRESIDENT

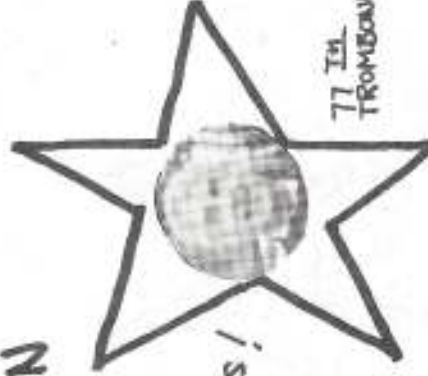
PHONE 205-4100  
3215 W. 54TH STREET  
LOS ANGELES, CA 90048

Best Wishes to M.B.C.C. Shipmates  
AND

The Music Man

WE'RE PLEASED TO  
LOAN YOU  
TWO OF OUR STARS!

MRS.  
SQUIRES



77<sup>TH</sup>  
TROMBONE

THE HYPERION OUTFALL SERENADERS  
Official Band of Manhattan Beach

\* SEE ME --  
BEFORE PURCHASING OR  
LEASING ANY MAKE OR MODEL  
OF CAR OR TRUCK!



P.S. -- CAN YOUR 2 FAVORITE  
PREACHERS BE WRONG?



**H O M E I M P R O V E M E N T**  
 BUILT-INS, CABINETS, PULLMANS,  
 DOORS HUNG/SHORTENED, WINDOWS, ETC.

MY MOTTO: NOTHING IS TOO SMALL,  
 LOTS OF STUFF IS TOO BIG, BUT I'LL  
 BE THE FIRST TO TELL YOU.

JACK FREEMAN  
 RETIRED WOOD SHOP INSTRUCTOR  
 (213) 546-1320

• SPEND SUMMER IN THE SIERRAS -- MAMMOTH LAKES REGION  
 \*\*\* ENJOY THE WONDERFUL CLIMATE! \*\*\*

- FUN and Sports -**
- FISHING • HIKING
  - FISH HATCHERY
  - SWIMMING HOT CREEK
  - JACUZZI • SAUNA
  - SCENIC GONDOLA RIDE
- also
- BODIE GHOST TOWN
  - DEVILS POST PILE
  - 7 MAMMOTH LAKES
  - 6 LAKES - SHORT HIKE



**FURNISHED CONDO**  
 \$30.00 PER NIGHT  
 NOTE: STAY 6 NIGHTS AND  
 PAY FOR 4 NIGHTS

- RON TROUPE
- RES: 376-7544
- BUS: 670-7500

WHEN YOU NEED QUALITY PRINTING

**BOSS**  
 BUSINESS OVERLOAD  
 SUPPORT SERVICES

806 Manhattan Beach Blvd., Suite 101  
 Manhattan Beach, Calif. 90266

DON CAMPBELL \*\*\*\*\*  
 (213) 379-9515  
 (213) 379-6205

7916403E

**BALLS**

doug  
diane  
mindy  
jill

Carter

GUITAR • BASS GUITAR

**KURT MAYO**  
 INSTRUCTOR • PERFORMER  
 \*\*\*\*\*

STUDIOS:  
 Manhattan Beach 213 545-3994  
 Torrance 213 320-0246



\*\*\*  
**CONGRATULATIONS --**  
 To THE CAST and CREW

\*\*\* of \*\*\*  
**THE MUSIC MAN**  
 WE APPRECIATE YOU !!  
 Bill & Ruth Purdon  
 \*\*\*\*\*

\*\*\*\*\*

★ ★ ★ ★ ★  
**DEANNE JOHNSON'S**

**IMAGE EXPO**  
 for men & women



**AKA HAIR AFTER**

TOTAL IMAGE CONCEPT INCLUDING:

- Complete Hair Care
- Corrective Hair Coloring
- Fine Hair Specialist

- Nail Care
- Waxing & Facials
- Tanning Bed
- Pedicures
- Makeup & Color Draping

Open Monday thru Saturday  
 & Evenings by Appointment

374-8979

976 Artesia Boulevard at Prospect  
 Hermosa Beach, CA 90254

P.O. BOX RENTAL  
 TELEPHONE MESSAGE SERVICE  
 24 HR. AVAILABILITY

MAIL STOP

1116-A 8TH STREET  
 MANHATTAN BEACH, CALIFORNIA 90266  
 (NEXT TO SUPREME PAINT)  
 (213) 374-7544

PARCEL SHIPPING VIA UPS

MAIL FORWARDING

CALL IN MAIL CHECK

↑ PAT & DEANNE JOHNSON -- our mums -- CONGRATULATIONS TO CAST & CREW ↓

\*\*\*\*\*



#### SHIPMATES

Although dedicated to good fellowship and fun, the Shipmates of the Manhattan Beach Community Church also devote a full measure of their time to service of the church.

Recreation includes regular potluck dinners with exciting entertainment, an active dance group, a hungry gourmet group, an intrepid camping group, trips to such varied sites as Anacapa Island, Hollywood Bowl, and the Crystal Cathedral, and strictly social parties.

Physical and spiritual support of the church is augmented by funds raised from the production of annual plays and musicals. Blessed with outstanding talent, direction and leadership, the consistent high quality of those works has been rewarding to the participants as well as the audiences, and a good time by all is always assured.

Congratulations, and thanks, are due our directors, the production staff and construction crew, for another job well done. We also wish to acknowledge and thank all members of our church family; the advertisers, local business people, patrons, and especially you, our audience, who make this such a successful event.

Thank You!

Bob & Virginia Homan  
Skippers, 1986

• *best wishes --  
for a great show!*  
• BREAK A LEG!



*from the Campbell family*

- KATHY • STEVE
- RYAN • COREY
- BRAD • K.C.

STEPHEN R. CAMPBELL  
VICE PRESIDENT INVESTMENTS

(213) 556-0734

PAINE, WEBBER, JACKSON & CURTIS  
INCORPORATED  
MEMBER NEW YORK STOCK EXCHANGE, INC.

ONE CENTURY PLAZA  
2029 CENTURY PARK EAST  
LOS ANGELES, CA 90067



## PATRONS

Jim & Evelyn Belt  
Dave & Bertha Bradburn  
Barney & Lori Brogan  
John & Marilyn Carson  
Frank & Evelyn Cochran  
Vic & Jan Cravello  
Robert & Sandra Devine  
Tom & Claudia Downs  
Conrad & Ann Evanoff  
Bruce & Peg Evans  
Glen & Barbara Grossman  
Wendell & Madelyn Harter  
Rick & Connie Hefner  
Sam & Carol Hitchcock  
Bob & Virginia Homan  
Vic & Debbie Jeter  
Ernie & Doris Johnson  
Charlie & Ann Jones  
Ron & Rita Koch  
Oliver & Carol Krienke  
Graham & Bunny Lewis  
John & Linda Mack  
Betty Jane Mallery  
April Bogart-Neary  
Bill & JoAnn Park  
Bill & Ruth Purdon  
Peter & Eileen Quass  
Ray & Andrea Russell  
Walt & Lil Smith  
Paul & Sue Sterba  
Lyle & Pauline Stoltenberg  
& Shayne Noble  
Charlie, Sally & Tim Stowe  
Peggy Strong  
Ron, Shelia & Bryant Troup  
Frances Teague  
Walt & Wanda Taylor  
Robert, Elaine, Eris & Dana Weiner