

# MBCC SHIPMATES PRESENT

THE 1984 PRODUCTION

5

PERFORMANCE DATES OF



# Never Say Goodbye

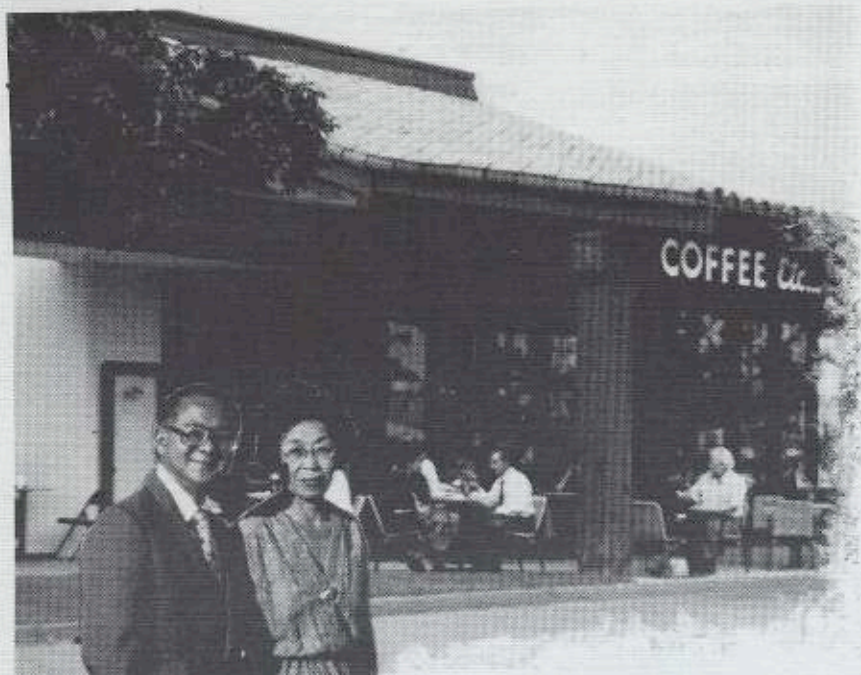
a musical\* by Glenn Grossman

\* WITH 30 PIECE BIG BAND & STRINGS

## PERFORMANCES

- FRIDAY, SATURDAY 30, 31 MARCH 8 PM  
6, 7 APRIL
- SUNDAY, 1 APRIL 7 PM

MANHATTAN BEACH COMMUNITY CHURCH  
303 S. PECK AVENUE



S a l u t e

*to all the volunteers for their devotion in putting on such a great production, especially the behind the scene people whose names are not mentioned in this program leaflet.*

*from  
Beatrice and Kim  
1984*

*We are open every day across from Buffums in Manhattan Village shopping center just south of Rosecrans Avenue.*

*We carry over 30 kinds of coffee beans, and serve espresso coffee, cappuccino, cafe au lait, sandwiches, mousse pies, cakes, etc.*



CAST

(IN SPEAKING ORDER)

JOANN RIDOLPHI.....BERNIE COLLIER  
RICK FARRELL.....JACK PARNELL  
CHARLIE STOWE.....GREG HELLER  
PAT JOHNSON.....ALLEN BARNES  
RICK HEFNER.....CABOT LASSITER  
RITA KOCH.....SUSAN BARNES  
MIMI LADD.....PENNY NICHOLSON  
GEORGE HAMMER.....MARK TAPUR  
FRANK RIDOLPHI.....TOMMY SIEGEL  
PAT EDWARDS.....MARY QUEEN  
JO TYLER.....FRAN DE SYLVA  
LISS JACKSON.....BESS GOODWIN  
PETER QUASS.....VICELLI MUSO

CHORUS

MARIE BISHOP, BARNEY BROGAN, SUSAN BLACKWELL-BROWN, DIANE CARTER,  
LAURA DREYFUS, BARBARA FRIETAG, JUDY GOLDEN, GUY HATLIE,  
JUDY HATLIE, CONNIE HEFNER, SARA HITCHCOCK, CORA KENTON,  
RON KOCH, BUNTY PETERSEN, FRANK RIDOLPHI, SUSAN SCHANZ,  
HEIDI THOMPSON, TAYLOR THOMPSON, JO TYLER.

DANCERS

SUSAN BLACKWELL-BROWN, DIANE CARTER, LAURA CRANE, LAURA DREYFUS,  
TINA DREYFUS, RICK FARRELL, GUY HATLIE, JUDY HATLIE, SAM HITCHCOCK,  
FRANK RIDOLPHI, JULIE RIDOLPHI, HEIDI THOMPSON, TAYLOR THOMPSON,  
JO TYLER.

NEVER SAY GOODBYE

Synopsis

After closing their show, "Goodbye to Our Castles", playwrights Allen and Greg need money for their new musical.

Introduced at the cast party, Lassiter, a representative from a cosmetics and vitamins company, offers them a chance to make money writing a sales-meeting show. As an added inducement, he promises them an "angel" for their musical. They accept and later present the company with some sales and musical ideas. The president likes the material but Lassiter insists on using the company fight song which they must fix; a frightful job.

Through a company spy, Lassiter finds out that the president is having money problems for a new product to be announced at the sales meeting. Lassiter proposes a deal: in return for making Lassiter president, he will get his "angel" to lend money for the new line.

The deal is made and Muso, the "angel" is introduced to the company president and Allen and Greg. In the mean time, Susan, Allen's wife, has agreed to work for the company writing sales material for the meeting.

Friction develops between Allen and Greg over what to work on: meeting or musical. On top of that, Penny, Greg's "girlfriend" walks out on him for the last time, sick of his inattentiveness.

Out of the problems and chaos, the sales meeting finally comes off. It is a great success and the people we've come to know go off into their respective sunsets; a new product and future for the company; a new musical and future for a songwriting team.

ORCHESTRA

CONDUCTOR:.....GLENN GROSSMAN

VIOLINS

Joe Derthick - Concertmaster  
Norma Gass - Principle  
Charlotte Iseda  
Harry Claybaugh  
Carole Ellis  
Jim Heard  
Devon M. Hall

VIOLAS

Ann Lasch  
Carole Ellis

CELLOS

Karl Graves  
Yvonne Tressel  
Ruth Barstow

BASS

Charles Grossman

WOODWINDS

Bill Malcolm  
Chris Grossman  
Zora Lasch  
Mary Mok  
John Abbott

BELLS/PERCUSSION

Erma Lou Cardon

FRENCH HORNS

Bob Peterson  
Carolyn S. Calland

TRUMPETS

Dave Bradburn  
Mark G. Myers  
Tom Dufur  
Gretchen Heffler

TROMBONES

Jack Freeman  
Eugene Manson  
Michael Calland  
Jim Gere

DRUMS

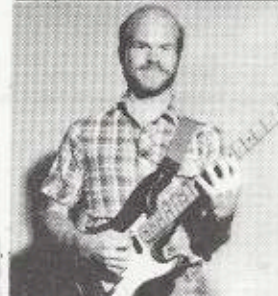
Gary Granger

GUITAR

Karl Grossman

PIANO/ORGAN

Evelyn Belt



WHO'S WHO.....CAST

JOANN RIDOLPHI . "BERNIE COLLIER"

JoAnn's debut in MBCC productions was in the role of Mickey Riley in "Dear Phoebe" followed by "Applause" as a member of the chorus. JoAnn is married and the mother of three. She and husband, Frank, are active in MBCC and Mariners. She works as a travel agent, and enjoys travel, tennis, bridge, and gourmet cooking.



RICK FARRELL . . . "JACK PARNELL"

Rick's previous musical role was that of a left-footed, right-handed baseball player in "Damn Yankees." Rick is a manufacturer's rep with a Southern California territory. Rick and his wife, Susan, have a new vocation video taping & editing weddings & musicals, including Rick's performance in "Never Say Goodbye."

CHARLIE STOWE . . "GREG HELLER"

Charlie is usually in the pit directing the orchestra, but since author/composer Glenn Grossman thought he knew the music better, Glenn installed himself as conductor as well. This left Charlie with nothing to do but return to the stage. . where he's appeared before in "Music Man," "Night of January 16," and two years ago as half of the cast in "I Do, I Do." He and wife, Sally, have directed numerous musicals over the years for MBCC and other local groups. Charlie's day gig is as an aerospace engineer at R&D Assoc.



PAT JOHNSON . . "ALLEN BARNES"

MBCC audiences will long remember Pat for his outstanding performance as Duane in "Applause." Previous to "Applause" his acting career had been on vacation since his High School production of "Room Service." We're glad you came out of retirement, Pat. He and wife, DeAnne, are Mariner Skippers for 1984, and the parents of six.

RICK HEFNER . . "CABOT LASSITER"

Rick's on-stage experience at MBCC consists of Rocky - the slow-witted & evil football player in "Dear Phoebe." He and wife, Connie, produced "Godspell" for the MBCC Summer Theatre, and they will again don the producer's hats for "Carnival," an early Fall production at MBCC. Rick is a member of the Contemporary Chorale, & he and wife, Connie, are active in Mariners.



RITA KOCH . . . "SUSAN BARNES"

Among Rita's many credits are "I Do, I Do," "Applause," "Damn Yankees," "Delegate Applegate," "Man of LaMancha" and many more. Rita directed "Dear Phoebe." She carries her talents into her profession teaching music and the performing arts at Center Middle School. She is also a busy Travel Agent. Rita and husband, Ron, are the parents of two.

WHO'S WHO.....CAST

PETER QUASS. . . "VICELLI MUSO"

Peter is an inveterate character actor who has trod the boards in "The Sound of Music," as Sancho in "Man of La Mancha," and Mc Murty in "Delegate Applegate." In dramatic efforts he portrayed Dr. Einstein in "Arsenic and Old Lace." He also played Beverly Carleton in "Man Who Came to Dinner" and the father of the weeping widow in "Night of January 16." When not acting, Peter calls on universities as an agent for a major text book publisher.



FRANK RIDOLPHI . "TOMMY SIEGEL"

Frank is back for another try at singing and dancing after his first appearance in an MBCC musical in the chorus in "Applause." His only previous stage appearance was in his ninth grade class production of "Father Knows Best." His major diversion from the production is working as an Advanced Systems Manager at TRW. He also spends time trying to keep things working around the house, such as automobiles, hot tubs and children.

PAT EDWARDS...."MARY QUEEN"

Pat has appeared in MBCC productions of "Man of La Mancha" "Sound of Music" "Curious Savage" and played Trudy Applegate in "Delegate Applegate". As a change of pace she played Olga, the cleaning lady in "Dear Phoebe", and this past Christmas directed and sang the Mothers role in the opera "Amahl and the Night Visitors". Most MBCC churchgoers recognize Pat from the back side directing the two childrens' choirs and the Contemporary Chorale. Pat is a soloist in MBCC senior choir and a music teacher in Manhattan Beach City schools.



JO TYLER . . . "FRAN DESYLVA"

Jo has appeared in "Once Upon a Mattress," "David and Lisa," "Little Mary Sunshine," "Applause" and "Godspell." She has co-choreographed several plays in the South Bay area. Jo sings with the MBCC senior choir and Contemporary Chorale. She has also sung with Santa Monica College Chorale Ensemble, & New Sounds of Hawthorne. She and Husband, Rod, are owners of Minuteman Press in Westchester and are the parents of two daughters.

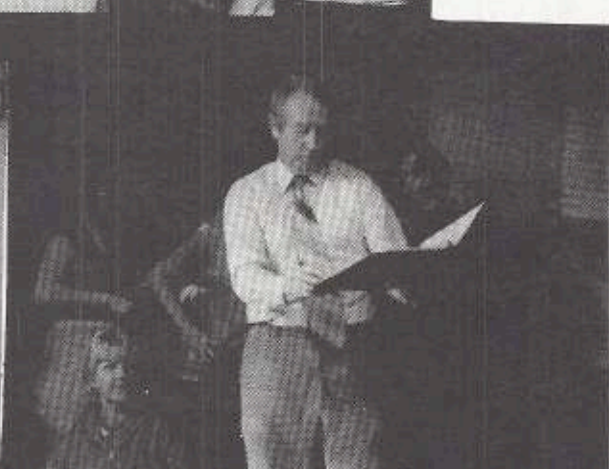
MIMI LADD . . "PENNY NICHOLSON"

Mimi loves the theatre; has performed in many South Bay productions. She played Rosemary in "How to Succeed," and appeared in "Plaza Suite" for Redondo Beach. For Hawthorne she did "Damn Yankees" and followed with our own "Yankees." Locally, she has also appeared in "Carousel," "Music Man" & "Annie Get Your Gun." She enjoys working with the students of Redondo High School Drama Department as a vocal coach.



LISS JACKSON . . "BESS GOODWIN"

Liss Jackson is MBCC's du-librarian (books & music) and teaches Composition and Creative Writing at Leuzinger High School. In "Phoebe," "Applause," and "Godspell," she played village idiots and painted the parrot cage for "Amahl." Not surprising, she plays the, never say it, ding-aling in "Goodbye."





GLENN GROSSMAN.....MUSIC DIRECTOR

Glenn Grossman has been involved with musical productions at MBCC since the early 1950s when he worked on the simple variety shows performed in the basement of the old church. Later in that decade, he and the late Adrian Brown wrote and produced three "book" musicals: INTERNATIONAL GEOPHYSICAL YEAR; CINNAMON BUNS; AND DELEGATE APPLLEGATE...the last was revived here four years ago by the Stowes.

Although Glenn has been a member of the orchestra in some of the recent Shipmates' productions, this is his first time at the podium since the original production of DELEGATE APPLLEGATE.

After 25 years with his own company, he now works for Hughes Aircraft as a film writer and producer.

(Incidentally, Mr. Grossman is the author and composer of "Never Say Goodbye".)



ANN GERE. . . STAGE DIRECTOR

"They'll do anything to get me off that stage!" That is why she's directing "Never," according to Ann. She has been in every Stowe show since "Music Man," 21 years ago, with one exception when she lived in San Francisco. "Never a starring role" she says "but what else can you do in February if you don't ski?" She and husband, Jim, (trombone section) enjoy sailing, tennis and creative traveling. Ann appeared as "Aunt Eller" in El Camino's production of "Oklahoma" last year.



SALLY STOWE . . SHOW COORDINATOR

Sally appeared as Dolly in "Hello Dolly" first at Redondo Beach Musical Theatre, and again at El Camino College's production. Sally has a long history of directing musicals, usually with her husband, Charlie, going back to "Music Man," "Bye Bye Birdie," "How to succeed. .," "Man of LaMancha," "Sound of Music," "Damn Yankees," "I Do, I Do," and "Applause." Sally is active with the Sunday School program at the church, and has worked on children's programs within the framework of the church.



LYLE & PAULINE STOLTENBERG.....PRODUCERS

The Stoltenbergs have been involved in many of the Shipmates productions. Lyle appeared in "Damn Yankees", and has worked in almost every facet of the off-stage arena. This is their second year as producers, and they're going to have a hard time topping their job on "Applause", (but they probably will!). Not only are they responsible for all of the technical aspects of the production, Pauline is keeping the cast & crew happy with coffee, tea & her sunny smile. In addition to their other overwhelming tasks, they are handling the ticket sales. Hats off to Lyle & Pauline.

WHO'S WHO.....PRODUCTION STAFF

HEIDI THOMPSON-CHOREOGRAPHER

Heidi has been involved in the Theatre since 1968 when she performed in the Beach Cities Musicals. She has also worked in El Camino productions. Heidi and her husband started a repertory company where she acted in such plays as "Fantastiks" and "Roar of the Greasepaint." Heidi choreographed "Applause," and she and her husband staged "Godspell" here at MBCC. She teaches dance and piano.



BARBARA HAMMER . CHORAL DIRECTOR

Barbara began working with Brown and Grossman in the old Mariner shows after her training at USC. Selected from her many rolls with our theatre group, her favorites are Mother Superior "Sound of Music," Mrs. Abernathy "Delegate Applegate," Magda, the Housekeeper "Night of January 16," and Mrs. Parrish in "Dear Phoebe." Barbara has been a solist with MBCC choir for many years, and when not busy with these activities, teaches third grade and a primary gifted class.



LYNN & ANN HENNE / STAGE MANAGERS

The Hennes have been valued members of the back stage team for many years, and have stage managed the last 8 shows. They have built a reputation as quick change artists unparalleled. Along with their expertise, they manage to keep a sense of humor while herding scores of people on & off stage (in the dark, yet), making speedy set changes & seeing that everyone has the right prop. Lynn is an X-ray equipment salesman, and Ann is a full-time homemaker. The hennes are proud parents of a new baby boy.



MIKE NEARY . . . . . LIGHTING

Mike is the chief engineer for our sophisticated lighting and sound systems, as well as lighting the stage during performances. Mike is an EE from Clarkson College of Technology in N.Y., and has worked for Xerox for 12 years. It was certainly a stroke of luck for MBCC when he joined us in 1978! The lighting and sound get better every year. Mike and his wife, April, reside in Manhattan Beach.



BRUCE EVANS.....PROGRAMS

Bruce & his wife Peg produced three shows for Shipmates.... "Sound of Music", "Delegate Applegate" & "Damn Yankees". Bruce started his show business career in Grand Rapids by directing the Chord-A-Lears & serving as business manager for several Lear Siegler shows. He acted as stage manager for the SPEBSQSA. Bruce & Peg are former Shipmates skippers, and although Bruce retired from Hughes last year, we're glad he hasn't retired from the theatre.



BILL & RUTH PURDON....SKIPPERS

Bill & Ruth have been members of M.B.C.C. for over 30 years. Bill taught Sunday School--6th, 7th & 8th graders shortly after the Church moved to its new location from 9th & Highland. Ruth has been Chairman of the Extension Board, served on the Diaconate Board & is active in Women's Fellowship. The Purdons are the current Skippers for the Shipmates organization.



PRODUCTION STAFF

Music Director.....Glenn Grossman

Stage Director.....Ann Gere

Show Coordinator.....Sally Stowe

Producers.....Lyle Stoltenberg  
Pauline Stoltenberg

Choral Director.....Barbara Hammer

Choreographer.....Heidi Thompson

Stage Managers.....Lynn Henne  
Ann Henne

Lighting Controllers.....Mike Neary  
Terry Wells, Mike Jackson

Audio Controller.....Walt Taylor

Make-Up Coordinator.....De Anne Johnson

Set Construction.....Lyle Stoltenberg  
Phil Gingrich, John Shyer  
Conrad Evanoff

Set Design.....Sally Palm, Cindy Charles

Set Painting.....John Hauginin, Carole Hagunin

Rehearsal Pianist.....Glenn Grossman, Charlie Stowe

Photographer.....Doug Carter, Bob Stewart

Patrons.....Bertha Bradburn

Program Cover.....Kathy Grossman

Program.....Bruce Evans, Peg Evans,  
Wanda Taylor, Gay Eyestone,  
Fuzz Eyestone

Tickets.....Lyle Stoltenberg  
Pauline Stoltenberg  
Frank Cochran

Publicity.....Diane Carter  
Ann Gere  
Pauline Stoltenberg

Program Advertising.....A. Bruce Evans  
Peg Evans

Auditorium Set-Up.....Phil Gingrich

Refreshments.....Philos & Adelpnos Groups,  
Graham Lewis  
Russ Stewart

### SHIPMATES

The Shipmates of Manhattan Beach Community Church are couples whose combined age total 80 or more and singles 40 and up. They are a caring, sharing group; participating in good fellowship, good deeds, and good times. Campouts, dancing, golf, gourmet outings, biking, bowling and pot luck gatherings are some of their many activities. New people are always welcome.

This annual musical or play, sponsored by Shipmates, is their primary fund raiser benefiting local charities. We wish to acknowledge and thank all members of our church family; the advertisers, local business people, patrons and especially you, our audience who make this such a successful event.

Bill and Ruth Purdon  
Skippers

---

## Mariners / Summer Theatre Group "CARNIVAL"

Mariners and the Summer Theatre Group are pleased to announce the presentation of "Carnival", coming to MBCC in the early fall. "Carnival" is an entertaining musical for the whole family, with lively songs and dances, all set in a colorful circus background. A number of parts are available for both children and adults, either on stage or in the production crew. Auditions will be held in July, and the performances will run September 28, 29, 30, October 5, and 6. Plan now to participate in this upcoming MBCC production!

**PAT  
SULLIVAN  
Real Estate**



**YES! We Handle  
PROPERTY MANAGEMENT!**

We get maximum rental **VALUE**  
We obtain the **TENANT** • We screen the **CREDIT**  
We prepare all **PAPERWORK**  
We handle all **MAINTENANCE**  
We pay all **BILLS**  
**ALL at little or NO cost to YOU!**

**545-6541**

1100 18th Street, Manhattan Beach

DO YOU LIKE SWING & JAZZ?

We have over 3,000 selections ranging  
from 1930 through 1980.

Call for a free catalogue of all our  
recordings available for transfer to  
tape for your playback equipment.

CHARLES GROSSMAN - 376-2695



SYNTHETIC LUBRICANTS  
RACE PROVEN

**ED DEAN**

AMS/OIL DEALER

201 N. Dianthus St.  
Manhattan Beach, CA 90266  
213-374-1301

**doug carter**

379-6403

PHOTOGRAPHY TO MEET YOUR NEEDS

• WEDDINGS • PORTRAITS • SPECIAL OCCASIONS



*Manhattan Beach Nursery & Florist*

*207 No. Sepulveda*

*complete nursery & florist*

*flowers for all occasions ~*

*wire service available*

NURSERY - 376-0567

FLORIST - 379-3634

# BONDED INCOME TAX COMPANY

*congratulates*

*Glenn Grossman*

*and the cast of*

*Never Say Goodbye*

FRANCIS (FRANK) O'LEARY

376-3264

Redondo Beach, California 90277

HOME & OFFICE VISITS OUR SPECIALTY



REALTOR®  
SELL  
EXCHANGE  
PURCHASE  
RENT



**KRIENKE REALTY**

1716 MANHATTAN BEACH BLVD.  
MANHATTAN BEACH, CALIF., 90266  
Phone 376-7967

LOTS  
HOMES  
INVESTMENTS  
COMMERCIAL

Dave Ehrhard  
Judy Grandinetti  
Tommy Hoover  
Judy Giss  
Carol Krienke

*The best to  
Shipmates  
Cast &  
Crew !*

Oliver Krienke  
Kenneth Giss  
Ed Hayes  
Gene Willis  
Ray Deaver  
Ron Koch

CYPRESS AUTO BODY, LTD.



(213) 379-8714  
650 CYPRESS AVE  
HERMOSA BEACH, CA 90254  
(SEE MAP ON BACK)

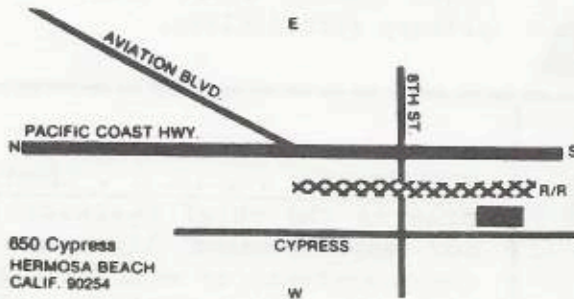
JOHN WESTPHAL  
MANAGER



Better Bicycles and  
Fitness Equipment

430 Pier Avenue  
Hermosa Beach, CA 90254  
(213) 376-2914

*5% discount with this ad*



DICK MARTINEZ  
FRANK ROSS

**COOKIE POST**

1142 MANHATTAN AVE.  
MANHATTAN BEACH  
CA 90266  
546-2266

WE DELIVER FOR ALL OCCASIONS

*London Colne Flowers*

200 N. AVIATION BLVD.  
MANHATTAN BEACH

WEDDING & PARTY SPECIALIST

PHONE 376-5134

*the slipt stitch  
yarns & needlecraft*



421 Main Street  
El Segundo, California

322-6793

*Good  
Luck*

JAMES M. DUFFIN, D. D. S.

*/ Orthodontics*

MICHAEL P. ADAMS, D. D. S.

A PROFESSIONAL CORPORATION  
973 MANHATTAN BEACH BLVD.  
SUITE C  
MANHATTAN BEACH, CALIF. 90266  
TELEPHONE 546-8525

**n**  
nickerson  
insurance  
services, inc.

william o. nickerson

2106 LOMITA BOULEVARD  
LOMITA, CALIFORNIA 90717

213-326-6333 • L.A.: 775-7397

*Best Wishes*  
*Shipmates*

SHEILA L. TROUPE

4401 WILSHIRE BOULEVARD  
POST OFFICE BOX 78237  
LOS ANGELES, CALIFORNIA 90076  
(213) 937-3790 RES. 378-7544

MASSACHUSETTS MUTUAL LIFE INSURANCE COMPANY  
SPRINGFIELD, MASSACHUSETTS 01111

Stephen F. Munyer

685 South La Brea Blvd.  
Inglewood, CA 90301  
(213) 677-7121



Victor E. Munyer & Sons

General Contractor - License #368066

*Each MR. BUILD Contractor is Independently Owned and Operated.*

**MIDAS**  
Manhattan • Hermosa



**MUFFLER & SHOCK ABSORBER SPECIALISTS**

Bill Switzer

3125 Pacific Coast Highway  
Hermosa Beach  
376-8735



Since 1948

Lic. #111650

**WINDSOR**  
**PLUMBING CORP.**

Plumbing & Heating      Service & Repairs  
Repipes • Remodels • Sewer & Drain Cleaning • Supplies • Solar

224 So. Sepulveda Blvd. • Manhattan Beach, CA • (213) 374-9696



**RICHARD YODER**

REGISTERED REPRESENTATIVE

UNIVERSAL HERITAGE INVESTMENTS CORPORATION  
23717 HAWTHORNE BLVD., SUITE 206  
TORRANCE, CA 90505

(213) 373-7351

(213) 772-6529

*English Copper Coins*

P.O. BOX 6216

TORRANCE, CA 90504

BRUCE & PEG EVANS 323-3846



*Enjoy ~ Spend Summer in the  
Sierras ~ Mammoth*

**FISHING  
FISH HATCHERY  
HIKING  
SWIMMING HOT CREEK  
JACUZZI ~ SAUNA  
SCENIC GONDOLA RIDE  
BODIE GHOST TOWN  
DEVILS POST PILE  
7 MAMMOTH LAKES  
6 LAKES, SHORT HIKE  
9 LAKES 3-11 MI. HIKE**

*Lakes ~  
Furnished Condo  
(\$30 PER NIGHT)*

*Ron Troupe*

*Res: 376-7544*

*BUS: 670-7500*

OUR THANKS TO THE FANTASTIC

CAST & CREW

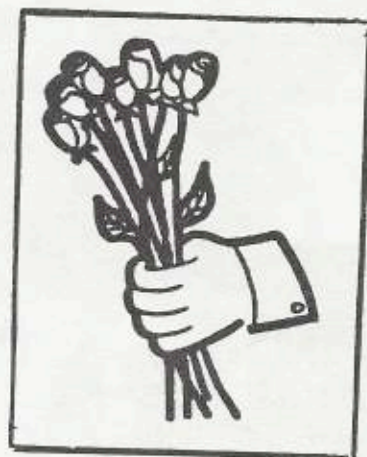
OF

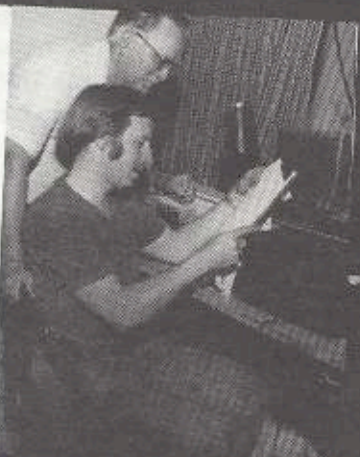
"NEVER SAY GOODBYE."

WE LOVE YOU,

LYLE & PAULINE

PRODUCERS







SAWS MOWERS SCISSORS TOOLS KNIVES CUTTERS CHISELS AXES

**SURF SHARPENING**  
1456 11th Street  
Manhattan Beach, CA 90266  
Phone 213-372-1827

**COMPLETE SHARPENING SERVICE**

Bill Woodall

**ROBERT W. HOMAN**

ATTORNEY AT LAW  
CIVIC CENTER PROFESSIONAL BLDG., SUITE G  
3465 TORRANCE BOULEVARD  
TORRANCE, CALIFORNIA 90503  
(213) 543-2688



I.P.A.T., C.A.P.A.  
C.C.P.T.A., C.C.P.A.A.

*Norma Van Nice*  
*Porcelain Art Teacher*

1550 FIRST STREET  
MANHATTAN BEACH, CA 90266 (213) 379-6976

AIR · STEAMSHIP · BUS · RAIL · HOTELS · TOURS

**LADERA TRAVEL SERVICE, INC.**  
AT SOUTH BAY

2041 ROSECRANS AVE., SUITE 103  
EL SEGUNDO, CALIF. 90245  
(213) 640-0527 (213) 772-1511

"BUNTY" PETERSEN  
MANAGER INTERNATIONAL SALES



**JAMES POST INSURANCE**

LYN COULTER

2368 Torrance Blvd.  
Torrance, California 90501  
(213) 328-3622 (213) 775-1514



Printing FOR THE JOB YOU NEEDED YESTERDAY

**MINUTEMAN  
PRESS**

**JO TYLER**

6312 WEST 89TH ST.  
LOS ANGELES, CA 90045

(213) 670-4522/23

(213) 672-9460

**Pamela Conde**  
Herbalife Supervisor

**GRAHAM LEWIS, M.S.**  
*Marriage, Family and Child Counselor*

205 Ave. I, Suite 24  
Redondo Beach, CA 90277

Lic.# 7141  
(213) 372-5107

**Herbal-Based Natural Products**

Weight & Cellulite Loss  
Decelerate Aging Process  
Energy Booster

Normalize Blood Pressure  
Reduce Cholesterol  
Arthritis Pain Relief  
Children's Herbal Multivitamin Formula



# Travel Concepts

**Joann Ridolphi**  
1926 Pacific Coast Hwy.  
Suite 102  
Redondo Beach, CA 90277  
213-316-7444

**MILES OF SMILES**  
VIDEO PRODUCTIONS

**STUDIO 2**  
VHS EDITING

545-3911

P.O. Box 655  
MANHATTAN BEACH, CA 90266

RICK FARRELL  
SUSIE FARRELL

**Hair After**  
Styles For Men & Women



**DEANNE JOHNSON**

374-8979  
976 Artesia Blvd at Prospect  
Hermosa Beach, Ca 90254

**P.O. BOXES FOR RENT**

**MAIL STOP**  
1116-A 8TH STREET  
MANHATTAN BEACH, CALIFORNIA 90266  
(NEXT TO SUPREME PAINT)  
(213) 374-7544

**SHIPPING AND RECEIVING  
VIA  
U.P.S. & FEDERAL EXPRESS**

*Best wishes to Cast & Crew  
Pat & De Anne Johnson  
owners*

**HE PAINTS . . . SHE PAPERS**  
WALL EMBELLISHMENTS

FOR ESTIMATES  
545-1024

MERRICK BROWN  
SUSAN BLACKWELL-BROWN

AIR - STEAMSHIP - BUS - RAIL - HOTELS - TOURS

**LADERA TRAVEL SERVICE, INC.**  
AT SOUTH BAY

2041 ROSECRANS AVE., SUITE 103  
EL SEGUNDO, CALIF. 90245  
(213) 640-0527 (213) 772-1511

RITA J. KOCH  
SALES REPRESENTATIVE

HOME (213) 376-6785

**SCOTALLY  
ENTERPRISES**  
COMPUTER SERVICES

Rick Noke  
(213) 477-3230

1010 Westwood Blvd.  
Los Angeles, Calif. 90024

AIR • STEAMSHIP • BUS • RAIL • TOURS

**LADERA TRAVEL SERVICE, INC.**  
AT SOUTH BAY

2041 ROSECRANS AVE., SUITE 103  
EL SEGUNDO, CALIF. 90245  
(213) 640-0527 (213) 772-1511



MILLIE ANTHONY  
CRUISE & TOUR SPECIALIST  
HOME (213) 376-7683

DAVID DWORKIN, M.D., F.A.C.P.  
DIPLOMATE AMERICAN BOARD OF INTERNAL MEDICINE

BAUER PROFESSIONAL BUILDING  
1045 ATLANTIC AVENUE, SUITE 508  
LONG BEACH, CALIFORNIA 90813  
TELEPHONE (213) 437-0506

INTERNAL MEDICINE  
HEMATOLOGY  
ONCOLOGY

GIUITAR • BASS GUITAR



**KURT MAYO**  
INSTRUCTOR • PERFORMER

STUDIOS:  
Manhattan Beach 213 545-3994  
Torrance 213 320-0246

DELTA  
(Devotion & Everlasting Love to  
Animals)

DELTA rescues, cares for and pro-  
vides medical attention & shelter  
to abandoned animals in the Los  
Angeles Forest.

Inquiries welcomed by Frances and  
Derek Teague. 374-6327.

CARPET AND UPHOLSTERY STEAM CLEANING

**HILL AND HILL DRAPERIES  
AND CARPETS**  
*Cleaning and Sales*

KEN HILL  
PRESIDENT

PHONE 295-4168  
3215 W. 54TH STREET  
LOS ANGELES, CALIF. 90048

*Olive H.  
Ziegler*

*designs from  
Oz*

POTTER - ARTIST

1825 PROSPECT AVE.  
HERMOSA BEACH, CA.  
(213) 374-0069

Manhattan Beach Mall  
500 S. Sepulveda  
Manhattan Beach, Ca.  
Ph. 372-4929

Delicatessen  
Bar B Que  
Catering  
Sandwiches

**PICKLE  
BARREL  
DELI**

Diane & Bob Denny  
**PAUL + BRIAN**

THE SHIPMATES PRESENT:  
"NEVER SAY GOODBYE"  
MUSIC & LYRICS BY GLENN GROSSMAN  
SYNOPSIS OF SCENES

ACT I

- Scene 1: The Barnes House  
CASTLES IN THE AIR  
THE WORDS  
THE WORDS (REPRISE)
- Scene 2: The Barnes House, Later
- Scene 3: Holiday Way Boardroom  
THE HOLIDAY WAY  
JOIN THE TEAM  
JOIN THE TEAM (REPRISE)

ACT II

- Scene 1: Fifth and Main
- Scene 2: The Barnes House  
WHERE AM I NOW?  
WHERE AM I NOW? (REPRISE)
- Scene 3: Holiday Way Office  
WE'VE GOT A PROBLEM
- Scene 4: Rehearsal Hall  
JOIN THE TEAM  
WORDS AND MUSIC  
WE'VE GOT A PROBLEM (REPRISE)
- Scene 5: The Barnes House  
LEADER OF THE BAND  
WHERE AM I NOW? (REPRISE)

INTERMISSION

ACT III

- Scene 1: Holiday Way Office  
MONOSODIUM GLUTAMATE  
NOTHING NEW  
LUNCH
- Scene 2: Fifth and Main
- Scene 3: Greg's Apartment  
NEVER SAY GOODBYE
- Scene 4: Limbo/multi-Media Stage  
REACHIN' UP

PATRON'S LIST

"NEVER SAY GOODBYE"

Phil & Millie Anthony	Wendell & Madelyn Harter
Jim & Evelyn Belt	Guy & Judie Hatlie
Dave & Bertha Bradburn	Paul & Ardath Hayes
Nick & Irene Chipeska	Rick & Connie Hefner
Frank & Evelyn Cochran	Don & Jan Hoverson
Jim & Pat Crane	Ernest & Doris Johnson
Vic & Jan Cravello	Ron & Rita Koch
Jack & Laura Dreyfus	Oliver & Carol Krienke
Rene & Anne Doublier	Graham & Bunny Lewis
Jerry & Carol Dutcher	Don & Chris Matso
J. C. & Pat Edwards	April Bogert-Neary
Bruce & Peg Evans	Bill & Ruth Purdon
Jerry & Louann Evans	Ray & Andrea Russell
Terry & Ginny Evans	Lyle & Pauline Stoltenberg
Conrad & Ann Evanoff	Charles & Sally Stowe
Jerry & Donna Foote	Timothy Stowe
Jim & Ann Gere	Walt & Wanda Taylor
George & Barbara Hammer	

Best wishes  
for a great show  
from the Campbell Family

Kathy

Ryan

Steve

Corey

Brad

K.C.

02131556-0744

STEPHEN R. CAMPBELL  
VICE PRESIDENT INVESTMENTS

PAINE, WEBBER, JACKSON & CURTIS  
INCORPORATED  
MEMBER NEW YORK STOCK EXCHANGE, INC.

ONE CENTURY PLAZA  
2029 CENTURY PARK EAST  
LOS ANGELES, CA 90067