

MBCB Theatre Board Presents



# the Sound of Music

*Music by*

**RICHARD RODGERS**

*Lyrics by*

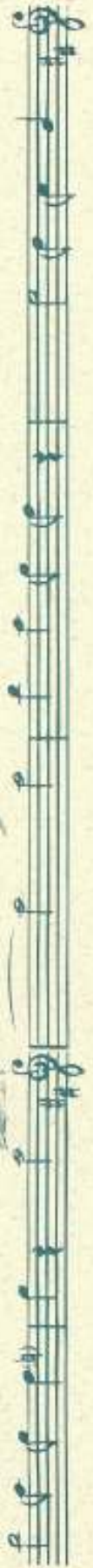
**OSCAR HAMMERSTEIN II**

*Book by*

**HOWARD LINDSAY and RUSSEL CROUSE**

*Suggested by*

**"The Story of the Trapp Family Singers"**







The Theatre Board of the  
Manhattan Beach Community Church  
presents

# The Sound of Music

*Music by*

RICHARD RODGERS

*Lyrics by*

OSCAR HAMMERSTEIN II

*Book by*

HOWARD LINDSAY AND RUSSEL CROUSE

*Suggested by*

"The Story of the Trapp Family Singers"

Performance Dates:

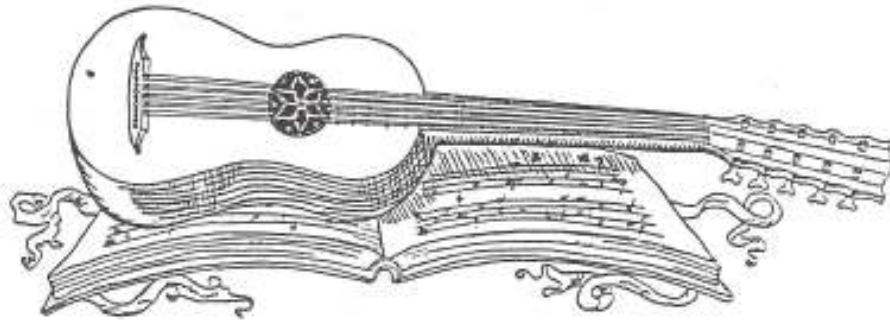
April 23, 24, 25, 29, 30, 1993

May 1, 2, 1993

*The Sound of Music* is presented through special arrangement with The Rodgers & Hammerstein Theatre Library, 1633 Broadway, Suite 3801, New York, NY 10019-6746.

## Dedication

We dedicate this program to Glenn Grossman and the legacy he has left. Glenn started "theater" in the early 1950's at Manhattan Beach Community Church. Together with Adrian Brown, he laid the foundation for the marvelous productions which involve and delight so many. Glenn believed that life was a stage and everyone had a part, whether in front of the footlights, behind the scenes, as part of the production crew, as a musician in the orchestra, as a financial supporter, or as member of the audience. We thank Glenn for starting what has truly become the MBCC theater community.





## Some Thoughts From the Senior Minister

For nostalgia buffs, the return of *The Sound of Music* to our stage recalls some of the happiest memories of our show business years at the Community Church. *The Sound of Music* was one of our earliest major musicals (1979) on Peck Avenue and gave great impetus to the string of grand musicals which followed through the years.

A number of our actors and behind the scenes specialists in this production were found in similar roles 14 years ago, including our fine director, Rita Koch, who got caught in a "habit" rather than in a "director's chair."

This production is the culmination of many years of experience and hard work to develop and fine tune our theater operation and this time as well, we have assembled another marvelous cast, not to mention the splendid production staff and crew to bring you this 1993 enchanting musical moment. If this year's edition doesn't warm your heart and lift your soul and send you out humming and singing, better check with your doctor, you may not be alive!

Thank you for being an important part of MBCC theater tradition.

John R. Calhoun  
*Senior Minister*  
*Manhattan Beach Community Church*

---

## A Note From the Director

*The Sound of Music* has been one of my favorite musicals for twenty-five years. Visiting Salzburg, Austria, in the 70's and 80's was exciting for me and visiting Stowe, Vermont, last fall where the von Trapp's owned their ski lodge was a wonderful experience. Some of my friends were fortunate enough to have attended a performance of the Trapp Family Singers years ago. They all went away with the joy of the musicality and love of the singers.

Now it is my turn to be awed by the amazing talent of our group of singers, accompanying cast, and our crew. When 87 adults and children auditioned in January for this show, I was very excited about the possibilities. Everyone has worked diligently and given extra time to create the best possible show for our presentation. If life is a song and love is the music, I have certainly enjoyed "Your Sound of Music."

Rita Koch  
*Director and President*  
*MBCC Theatre Board*

## SYNOPSIS

(The story takes place in Austria, early 1938)

### ACT I

- Scene 1      Nonnberg Abbey.  
              "DIXIT DOMINUS," "MORNING HYMN,"  
              "ANGELES BELLS," "ALLELUIA" ..... Nuns
- Scene 2      Mountainside near the Abbey.  
              "THE SOUND OF MUSIC" ..... Maria
- Scene 3      The office of the Mother Abbess, the next morning.  
              "MARIA" ..... Sisters Berthe, Sophia, Margareta, Mother Abbess  
              "MY FAVORITE THINGS" ..... Mother Abbess, Maria
- Scene 4      A corridor in the Abbey.  
              "MY FAVORITE THINGS" ..... Maria
- Scene 5      The living room of the Trapp villa, that afternoon.  
              "DO-RE-MI" ..... Maria, the von Trapp children
- Scene 6      Outside the Trapp villa, that evening.  
              "SIXTEEN GOING ON SEVENTEEN" ..... Rolf, Liesl
- Scene 7      Maria's bedroom, later that evening.  
              "THE LONELY GOATHERD" ..... Maria, the von Trapp children
- Scene 8      A hallway in the Trapp villa.  
              "THE LONELY GOATHERD" ..... Gretl
- Scene 9      The terrace of the Trapp villa, six weeks later.  
Reprise:      "THE SOUND OF MUSIC" .... The von Trapp children, Maria, Captain
- Scene 10     A hallway in the Trapp villa, one week later.
- Scene 11     The living room, the same evening.  
              "SO LONG, FAREWELL" ..... The von Trapp children
- Scene 12     A corridor in the Abbey.  
              NUN'S PROCESSIONAL: "MORNING HYMN" ..... Nuns
- Scene 13     The office of the Mother Abbess, three days later.  
              "CLIMB EV'RY MOUNTAIN" ..... Nun

### INTERMISSION





Rita Koch

Director

Rita's list of credits on stage is longer than, and as inspiring as, the procession of nuns she has assembled for *The Sound of Music*. She has performed at MBCC since the 1960's in many shows including *How To Succeed Without Really Trying*, *Man of La Mancha*, *Damn Yankees*, *Delegate Applegate*, *Guys and Dolls* and *1776*. Most recently Rita starred as Anna Leonowens in MBCC's production of *The King and I*.

Before retiring from teaching junior high students, Rita also directed many musicals and concerts at Center School and Manhattan Beach Intermediate School in Manhattan Beach. In 1992, she also produced two radio dramas for MBCC.

When asked what she liked best about directing *The Sound of Music*, Rita replied, "working with so many adults and children who are so talented in so many ways." The members of the entire production ensemble feel the same way about the dedicated and talented Director of *The Sound of Music*. That's you, Rita!





**Pauline Stoltenberg and Ron Koch**

**Co-Producers**

Pauline and Ron team up this year to produce *The Sound of Music*.

Pauline, with her husband, Lyle, has co-produced many prior MBCC productions including *Applause*, *Never Say Goodbye*, *Guys and Dolls*, *The Music Man* and *Sugar*. She has also been treasurer for multiple productions and volunteered her services to paint scenery, coordinate ticket distribution, design the program, and whatever else is needed.

Ron has been on stage at MBCC ever since Charlie Stowe discovered his beautiful tenor voice during the auditions for *Man of La Mancha* and selected him to play Anselmo. Among his many other credits, Ron has played Moonface in *Anything Goes*, Rocky in *Damn Yankees* and starred in *Harvey*. Ron produced *I Do, I Do* in which his wife, Rita, starred.

What does it involve to be the producers? Everything. And that is exactly what Pauline and Ron both do so well, everything! They organize, coordinate and most importantly they handle every task, make each decision and respond to every request or inquiry with the patience of a nun (or a priest, eh Moonface?!)



## Cast

Maria	Lois Bourgon
Sister Berthe	Lyn Coulter
Sister Margaretta	Nancy Jo Doughty
The Mother Abbess	Barbara Hammer
Sister Sophia	Delpha Flad
Captain Georg von Trapp	Dave Harris
Franz	J. C. Edwards
Frau Schmidt	Diane Carter
Liesl	Julie Jackson
Friedrich	Gareth Osborn
Louisa	Michele Avignon
Kurt	Ben Harris
Brigitta	Katie Munson
Marta	Brittany Avignon
Mark	Roger Kuch
Gretl	Shannon Seyferth
Rolf Gruber	Scott Gustafson
Elsa Schraeder	Pat Edwards
Ursula	Melissa Calhoun
Max Detweiler	Ray Russell
Herr Zeller	Peter Quass
Baron Elberfeld	John Doughty
Admiral Von Schreiber	Sam Hitchcock
Fraulein Schweiger	Esther Mio
Party Scene Dancers	Sam and Carol Hitchcock Vic and Bonnie Jeter Dan and Carolyn Smith Inge Plier

New Postulant ..... Sue Brown

Soldiers ..... Vic Jeter  
Ron McIntyre  
Brian Russell

### Nuns

Kristi Alderman  
Luci Alderman  
Barbara Anderson  
Linda Avignon  
Susan Blackwell  
Deborah Cirilo  
Sandy Hanna  
Marge Hester  
Kimberly Hitchcock  
Jenny Hughart  
Ann Jones  
Barbara Jones  
Janet Lally

Sue May  
Tamisha Nakamoto  
Sally O'Mara  
Teggan Parker  
Inge Plier  
Nina Sanchez  
Margo Schott  
Betty Simon  
Sharon Taylor  
Jo Tyler  
Nancy Winters  
Lois Woodall



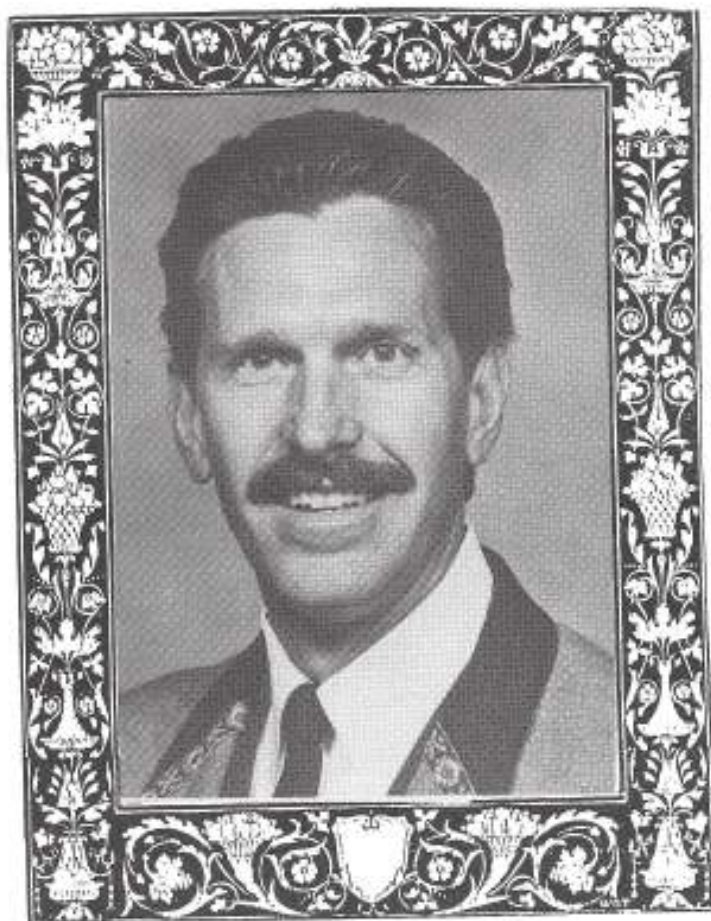


## Lois Bourgon

## Maria

Lois's roles in MBCC productions demonstrate that one can change the direction of an otherwise wayward life. Lois has transitioned from a "Hot Box Girl" in *Guys and Dolls*, a zany bubble head in *Anything Goes*, a gold-digger in search of a Sugar daddy, to the "head wife" in the harem of the *King of Siam*. Now in the role of Maria, Lois lives in a convent and then takes on the commitment of wife to Captain von Trapp and mother to his eight children.

Off stage, wife and mother of two teenagers, Lois appreciates her wonderful, understanding husband, Virgil, and children, Brandi and Alex, for their continuing support as she "climbs every mountain" and "follows every rainbow."



## Dave Harris

## Captain Georg von Trapp

This is Dave's third role on the MBCC stage. He first appeared in the role of a captain in the MBCC production of *No Time For Sergeants*. He dug deeply in his next MBCC appearance as Mr. Sowerberry, the Undertaker, in *Oliver*. As Captain von Trapp tonight, Dave foregoes the affection of a wealthy baroness for the love of a nun! Playing the father of a household, however, comes naturally to Dave, especially because his "real-life" son, Ben, plays one of his Von Trapp brood.

In 1980, Dave and wife, Lynn, never expected it would come to this when they actually vacationed at the real von Trapp family lodge in Stowe, Vermont.

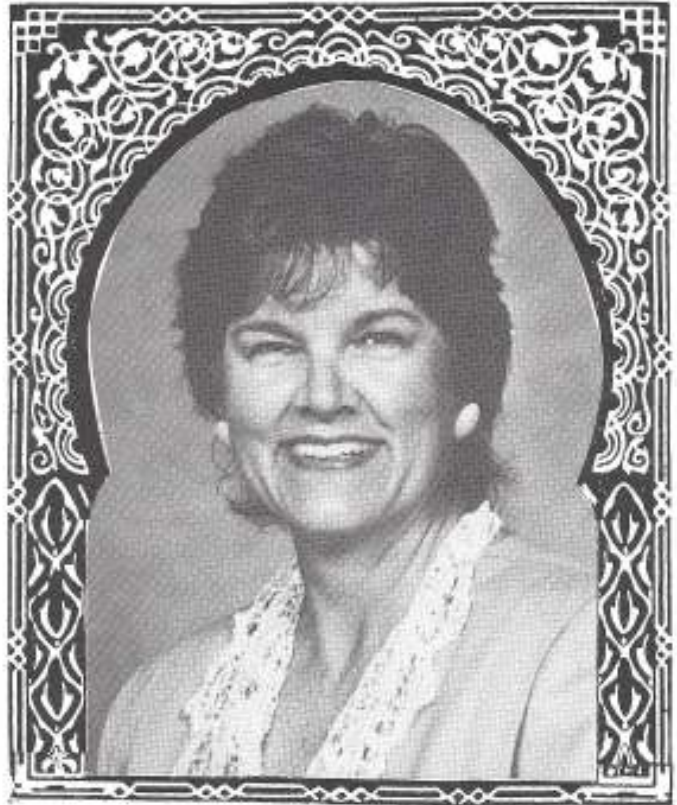
He says he has enjoyed his role in *The Sound of Music* so much that he may consider saying "so long, farewell, auf wiedersehen, goodbye" to his insurance business and opt for a career in theatre...NOT!

Pat Edwards

Baroness Elsa Schraeder

Pat is no stranger to all things musical and MBCC. Full-time Director of the Senior Choir and Children's Choirs, Pat has also directed productions of various musicals including *The King and I* and *Oliver*. She has starred as Marian in *Music Man* and Sarah in *Guys and Dolls*. In her spare time, Pat performs with the Jane Hardester Singers and was featured in this year's delightful evening of favorite opera choruses.

As Baroness Elsa Schraeder in the production of *The Sound of Music*, Pat does a reprise of her 1979 performance in this same role. Her secret to looking as young now as in 1979? -- Keep busy and sing "Do Re Mi" (in your dreams!).



Ray Russell

Max Detweiler

Ray has been on stage since his high school performances as King Arthur in *Camelot* and Henry Higgins in *My Fair Lady*. This is at least his eighth appearance in MBCC theatre productions, tonight as the opportunist, Max Detweiler.

Father of 15 year old Brian, Ray enjoys sharing tennis and camping with him.

An astronomer with The Aerospace Corporation, in his spare time Ray also takes delight in photography of "heavenly bodies."



**Barbara Hammer**

**Mother Abbess**

Once again Barbara brings to our MBCC stage another memorable performance, as Mother Abbess. She first performed this role in the 1979 production of *The Sound of Music*. Since then, Barbara has played Betty Meeks in *The Foreigner*, General Cartwright in *Guys and Dolls*, Mrs. Parish in *Dear Phoebe* and mother in *Amahl and the Night Visitors*, and many, many other roles.

Having received her degree in Music at USC, Barbara also lends her talents to *The Sound of Music* as Adult Voice Coach.

There's no hesitation when asked for a list of "My Favorite Things." Barbara replies with pride, "my grandson, Tim, and granddaughter, Brittany."



**Julie Jackson**

**Liesl**

It's hard to believe this is Julie's debut on the MBCC stage. Playing the role of Captain von Trapp's oldest daughter, she sings and dances and reminds each of us of that special time when we were "sixteen going on seventeen"...

Julie has performed as a dancer in high school productions of *Music Man* and *Bye, Bye Birdie*, in *Gypsy* for the San Jose Civic Light Opera and in various Super Bowl and Olympic ceremony shows.

A graduate of UCLA and now Executive Education Manager at UCLA's Business Management School, Julie is the daughter of George and Nancy Jackson.

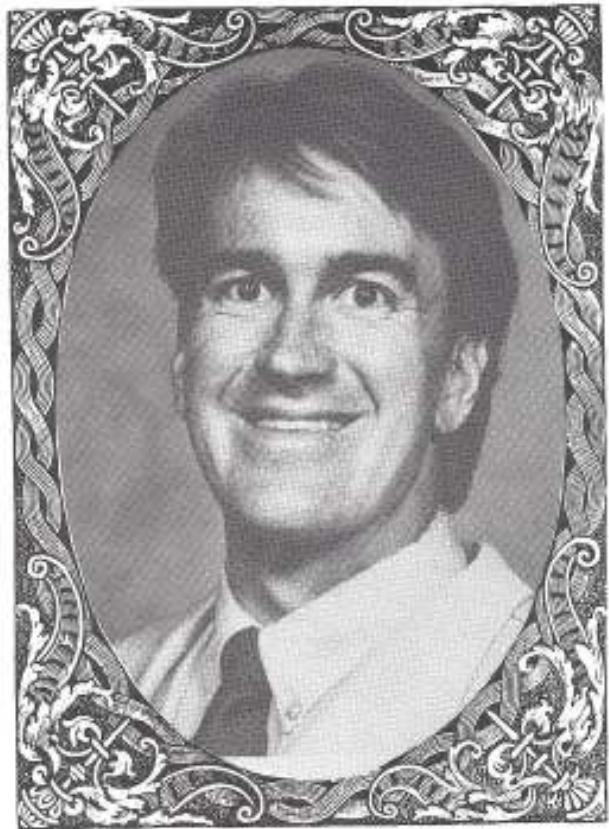


**Scott Gustafson**

**Rolf**

His talents honed from roles in various Aerospace Employees Association Musical Comedy Club productions including Curly in *Oklahoma*, Fred in *The Campaign* and Woody in *Finian's Rainbow*, this is Scott's second time on stage at MBCC. He played Roger Sherman, the delegate from Connecticut in MBCC's version of *1776*.

Scott, a rocket scientist (really!) with The Aerospace Corporation, appreciates the infinite patience shown him by choreographer, Lyn Coulter, and co-star, Julie Jackson, in preparing for tonight's performance. Playing Rolf, the handsome young suitor of Captain von Trapp's teenage daughter, who wouldn't want to spend time rehearsing with, Scott...?



Gareth Osborn

Friedrich

Gareth, age 14, is already a seasoned performer. Among his many roles, he has played Joseph in *Joseph and the Amazing Technicolor Dreamcoat*, Peter in *Peter Pan* and a prince in *The King and I*. As Friedrich in *The Sound of Music*, he likes all of the songs.

Gareth resides in Manhattan Beach with his parents, Jone and Bill Osborn, and sister, Elizabeth. He enjoys playing computer games and making movies with friends.



Michele Avignon

Louisa

Michele's varied roles on stage demonstrate her flexibility as a performer. She has portrayed Peter Pan, Cinderella, a pirate, a chimney sweep, and in the MBCC Children's Theater production of *Wizard of Oz*, she played both the coroner and Miss Gultch. As Louisa von Trapp, Michele most enjoys singing the reprise of "Do Re Mi" at the concert hall before saying "so long, farewell."

In this production of *The Sound of Music*, Michele shares the stage with her real life mother (who pretends she is a nun) and sister, Brittany.

A freshman at Mira Costa High School, Michele's favorite subject is biology.

Ben Harris

Kurt

Ben is a sixth grade student at Grandview Elementary. He has already played leading roles in several MBCC productions including David in *David and Goliath*, the Captain in *Jonah*, and Marmaduke in *Toyland*. His favorite song in *The Sound of Music* is "So Long, Farewell" because he enjoys singing with his "stage" family and the way the musical number is choreographed.

Ben can be seen studying in the balcony in the community hall between scenes; and when he's not rehearsing, he likes to play football.





**Katie Munson**

**Brigitta**

Katie, playing the part of Brigitta, is known for her straightforward honesty on and off stage. When asked how she manages to get her homework done with such a grueling rehearsal schedule, Katie replies, "I don't know!" Katie, age 11, attends Grandview Elementary School where her favorite subject is social studies.

Her previous theatre experience includes roles in the *Nutcracker*, *Wizard of Oz*, *Toyland*, *Peter Pan* and *Rainbow Express*.



**Brittany Avignon**

**Marta**

Brittany's favorite scene is the one where she and her stage brothers and sisters sing "The Sound of Music." When asked why, she replies "because I get to wear a curtain outfit." (Yes, Mom, Linda, and Dad, Major, there are alternatives to the shopping malls).

A member of the MBCC Carol Choir for three years and the Junior Choir for three additional years, Brittany, at age 12, is an experienced vocalist. Brittany also starred as Mary in the 1992 MBCC Children's Theater production of *Toyland*.

In her spare time, Brittany reads, draws, skis, plays tennis and soccer and spends time with her friends and family.

**Roger Kuch**

**Mark**

Roger plays the part of Mark, one of the von Trapp twins, in tonight's production of *The Sound of Music*. One wonders how he manages all the rehearsal time while maintaining straight A's and playing basketball, baseball and tennis. According to Roger, his secret lies in getting up early and staying up late and by doing his homework ahead of time on the weekends. Yes, "There's No Way To Stop It," should be the theme song for this self-motivated sixth grader.

In addition to roles in several MBCC children's theatre productions, Roger played the lead role (Colonel Casey) in his school play, *Babyland* at Pennekamp.





**Shannon Seyferth**

**Gretl**

Playing the youngest of the von Trapp children, Shannon, at age 10, attends Pacific Elementary School in Manhattan Beach. She's been making notes on how her older "stage" brothers and sisters act so she can be the perfect big sister to her baby brother, Alex Seyferth.

Shannon loves the wedding scene in *The Sound of Music* and the songs the nuns sing.

Her favorite subject in school is science; and in her spare time, Shannon likes dancing, reading and performing. She was the narrator in the Redondo Beach Parks and Recreation Department's production of *Joseph and the Amazing Technicolor Dreamcoat* and a princess in the MBCC's *The King and I*.



**Delpha Hacker Flad**

**Sister Sophia**

A former chorus girl in *Sugar*, and one of the many King's wives in *The King and I*, Delpha has seen the error of her ways and became a nun. Appearing as Sister Sophia, she adds her lovely voice to *The Sound of Music*.

Employed by the City of Los Angeles in Public Affairs, Delpha and her husband, Phil, also enjoy singing together in the MBCC Senior Choir.

**Nancy Jo Doughy**

**Sister Margareta**

This is Nancy's first appearance on the MBCC stage although she has had some high school acting experience which was just a "few" years ago according to Nancy (she intends to go to confession right after the last show...).

President of our Senior Choir, Nancy has participated in many Senior Choir concerts. Occasionally she and her husband, John, with a small ensemble, provide special music for Sunday worship services.



### Lyn Coulter

### Sister Berthe

Lyn's passion for theater is evidenced by her multifaceted involvement. She directed *Anything Goes* for MBCC, starred as Margo in *Applause*, Rosemary in *How to Succeed*, designed the costumes in the recent productions, *The King and I* and *The Foreigner*, and choreographed more productions for MBCC than the number of Captain von Trapp's children!

Lyn recently costumed an original play, *Millay-Poet, Pianist* for the Long Beach Community Players, Inc. and is our costume coordinator for tonight's *The Sound of Music*.

The words, 'How Do You Solve A Problem' are never cause for concern when Lyn is involved as she tackles everything with her inimitable smile and positive attitude.

An insurance agent with Post Insurance, Lyn can't wait to hear the first sounds of the overture; every night is opening night to her.



## Production Staff

Director .....	Rita Koch
Producers .....	Pauline Stoltenberg and Ron Koch
Orchestra .....	Evelyn Belt
Adult Vocal Coach .....	Barbara Hammer
Children's Vocal Coach .....	Marcia Hoffman
Rehearsal Pianist .....	Evelyn Belt, Genevieve Kiser
Set Design .....	Sally Palm and Rita Koch
Construction, Set and Stage .....	Lyle Stoltenberg, Coordinator Jack Freeman, Glen Hester, Ron Koch, Bruce Kuch, Bill Osborn and Bill Woodall
Light, Sound and Special Effects .....	Mike Neary, Coordinator Phil Flad, Ron Koch, Lyle Stoltenberg and Terry Wells
Stage Managers .....	John and Carole Hugunin
Choreography .....	Lois Bourgon, Lyn Coulter, Kim Foster and DeAnne Johnson
Costumes .....	Lyn Coulter, Coordinator Deborah Cirilo, Fran Freeman, Susan Knudson and Mary McIntyre
Set Painting .....	Sally Palm, Coordinator Glen Hester, Nancy Jackson, Jack Jensen, Jane Munson, Glenn Patmore, Eileen Quass and Bill Woodall
Make-up and Hair .....	DeAnne Johnson, Coordinator, Delpha Flad, Carol Hitchcock, Breeanna Noble and Carolyn Smith
Programs .....	Anne-Marie Saunders and Sue Sterba
Program Advertising .....	Helen and Paul Garrett
Patrons .....	Carole and Walt Kilmanas
Patron Brunch .....	Joanne Mailloux
Patron Brunch Hosts .....	Lois and Virgil Bourgon



**Ticket Sales** ..... Rosie and Scott Karlin  
**Photography** ..... Doug Carter  
**Publicity** ..... Diane Carter  
**Facility Managers** ..... Tom Downs, Phil Gingrich and Lyle Stoltenberg  
**Refreshment Coordinator** ..... Mary McIntyre  
**Graphics** ..... Kim Foster  
**Video** ..... Paul Garrett  
**Ushers Coordinator** ..... Pauline Stoltenberg  
**Printing** ..... Rod and Jo Tyler  
**Intermission Refreshments** ..... Adelphos, Philos and Shipmates



**Evelyn Belt**

**Orchestra Conductor**

When Charlie Stowe handed Evelyn the baton in MBCC's 1990 production of *Sugar*, Evelyn tried her hand at conducting a few numbers. And, presently there's "No Way To Stop It!" She rehearses the orchestra, fine tunes the timing between what's happening on stage with what's happening in "the pit" and conducts each performance of *The Sound of Music*. Having transitioned from many roles on stage and behind the scenes, Evelyn's favorite part now is the overture because there are no "distractions" going on on stage!



**Marcia Hoffman**

**Children's Vocal Coach**

Marcia, MBCC's associate minister in charge of the youth programs, first directed a children's choir while a junior in high school. An accomplished vocalist, she starred as Laurie for a production of *Oklahoma* and this year portrayed Mary, Mother of Jesus, in an original sanctuary drama with music, *Women At The Cross*. Thus, assuming the role of children's vocal coach for *The Sound of Music* again combines two of her favorite things, youth and music.

Other special interests of Marcia include golf, playing bridge and vacationing with her husband, John, and children, Brad, Vince and Francine.

**Genevieve Kiser**

**Rehearsal Pianist;  
Keyboards; Orchestra**

Genevieve has been part of the "musical scene" in the South Bay as pianist, organist and accompanist for thirty-five years. Once again she lends her expertise as a rehearsal pianist for yet another MBCC production. And, aren't we lucky to have her as our church organist, especially when she pulls out all the stops! Genevieve's favorite scene in *The Sound of Music* is when Maria sings of the virtues of spending time in the mountains—it reminds her of her native Colorado.



**Lyle Stoltenberg**      **Stage Construction Coordinator**

A retired engineer from TRW and Rockwell, Lyle continues to be anything but retired. He is constantly making changes and improvements to transform the community hall into a unique and charming theater for MBCC productions. He has designed and constructed the sets for just about every production at MBCC since he and wife, Pauline, came to the church in 1974. Lyle looks forward to the opening scene of *The Sound of Music* each evening because he believes it is "just the beginning of a great evening of entertainment for all of us."

In his "spare time," Lyle likes to sing in the Senior Choir, play with his grandchildren and go with Pauline to their desert home.

**Sally Palm**

**Set Design**

What would a production at MBCC be without Sally's expert touch as the set designer? As though teaching painting and art for Redondo Beach City Schools and painting the scenes for *The Sound of Music* weren't enough of the oils and water colors, Sally works on illustrations for her son's poems. During her "time off," Sally enjoys skiing with her husband, Noel, and adult children and grandchildren. (With her schedule, she thinks she'll be able to squeeze in a skiing weekend in 1998!).





**Mike Neary**                      **Light, Sound and Special Effects**

If we were to list Mike's credits as technical director of MBCC productions, it would fill the page! He's been engineering lights and sounds since 1981 when "he got involved" with the musical *Damn Yankees*. An engineering manager with Xerox for 21 years, Mike holds a degree from Clarkson College of Technology in New York.

To balance his life, when he's not designing a new lighting system, stringing wires or adjusting a spotlight, Mike heads for the hills to hike and backpack. (And, no, he doesn't take with him a thousand foot extension cord!).



**Carole and John Hugunin**                      **Stage Managers**

Carole and John bring seasons of experience as backstage support managers to this production. Their first behind-the-scenes post for MBCC theatre presentations was as property managers for *Guys and Dolls* in 1985. They've been involved in MBCC theatre every year since then, just to prove you can *Never Say Goodbye* (for which they painted scenery)! John has started a "Hug-A-Nun" campaign during *The Sound of Music* to which Carole suggests (in true John Hugunin fashion) "Nun of that, John."

**Kim Foster**    **Graphic Designer**

Marketing Director at Hamagami/Carroll and Associates in Santa Monica, Kim loves to design. She created the graphics for *The Sound of Music's* publicity and the cover for tonight's program. She "designed" the production number, "Do Re Mi" choreographing the children's movements around the stage. Word has it that Kim has recently "designed" something else novel--"a door party" designed to celebrate a commissioned work of art installed at Kim and Sam Foster's Redondo Beach home.



**DeAnne Johnson**

**Make up and Hair**

DeAnne has worked on all MBCC productions since *Applause* in 1983 applying her professional touch to the faces and coiffures of the performers and teaching would-be-stars how to make more than just their feet dance. DeAnne also creates beauty during her regular work as the owner and operator of Image Expo, a salon in Hermosa Beach. Despite the seeming emphasis on "outward appearance," DeAnne's true nature is revealed in her answer to an inquiry as to her favorite scene in *The Sound of Music*. Her reply: "All the scenes with the children because they never act. They're just themselves."



**Program**



**Advertising**



**Patrons**



**Publicity and Photography**



**Ticket Sales**







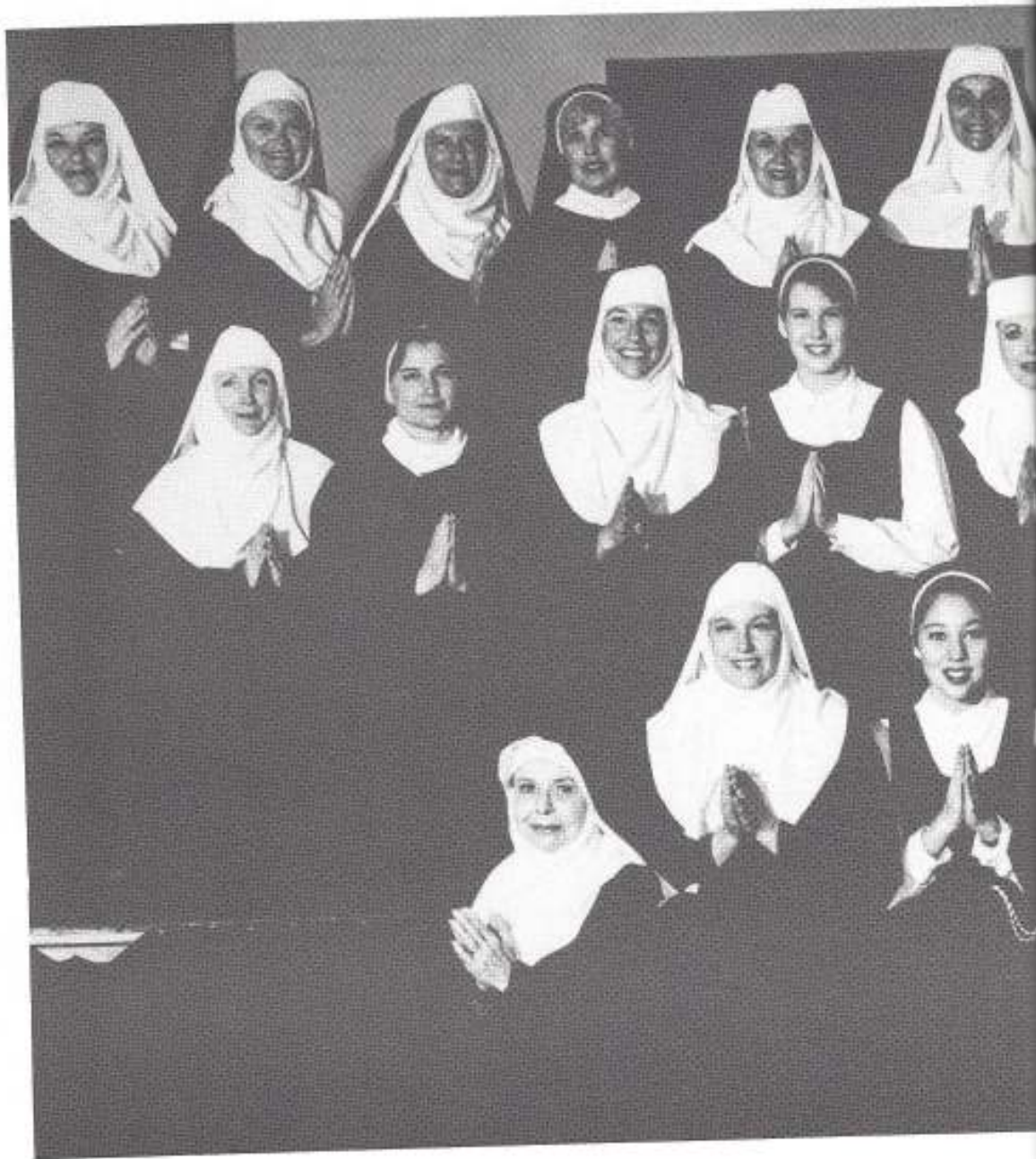
## ACKNOWLEDGMENTS

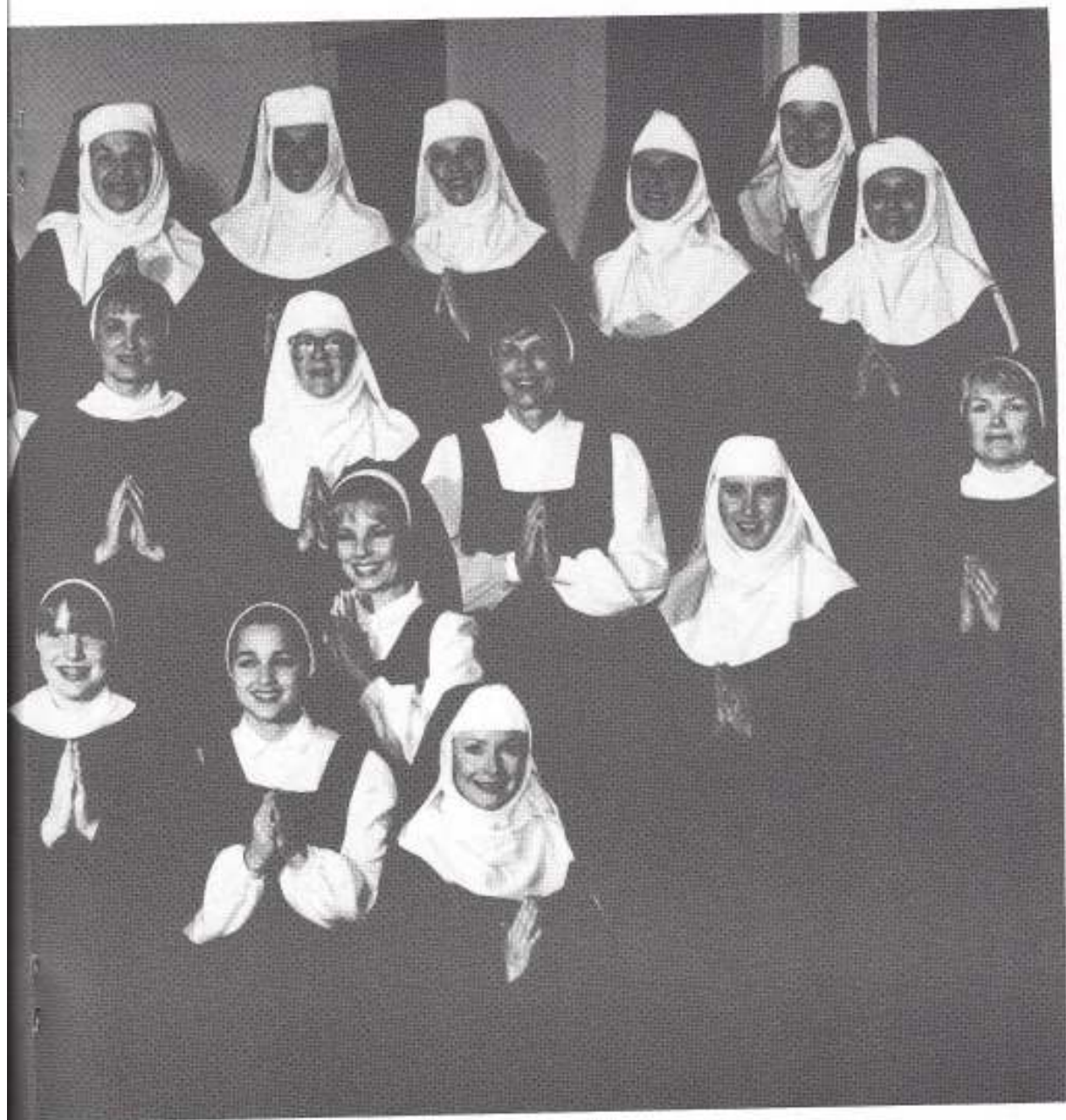
*Captain von Trapp's tuxedo courtesy of Riviera Tuxedo  
and  
blue blazer courtesy of Dave Gooding*

*Rolf's bicycle donated by  
Ted Ernst Bicycles  
(310) 318-5553*

*And thanks to all our patrons  
and advertisers for your  
continuing support.*

*And thanks to our audiences  
one and all.*











# The Orchestra



## Violins

Norma Gass, Concertmistress  
Jim Heard  
Karen Lawrence  
Thi Pham  
Paul Levin  
Katin Eninger

## Viola

Carole Ellis

## Cello

Gail Matulaitis  
Katie Zuckerman

## Bass

Bill Malcolm

## Flute

Pam Conde  
Richard Babcock  
Julia Heard

## Oboe

Ed Retzler  
Andy Meyer

## Clarinet

Joanne Davidson  
Mary Mok Malcolm  
Bob Johnson

## Bassoon

Hal Bowers

## Trumpet

Dan Oltrogge  
Mike Rotman  
Bryron Mhyre

## Horn

Jerry Old  
Bob Peterson  
Bob Maxwell

## Trombone

Ed Kramer

## Keyboard/Harp

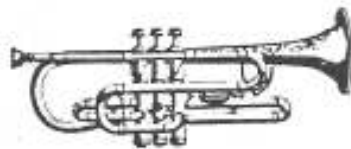
Genevieve Kiser

## Guitar

Arnold Alderman

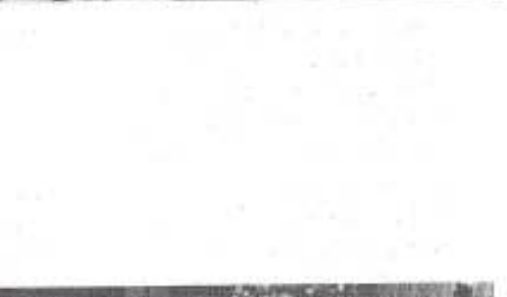
## Percussion

Gary Granger





2150A 1971A1





## PATRON ANGELS



### Cloud 9

Lauretta Hitchcock  
Ron and Rita Koch

Bill and Ruth Purdon  
Lyle and Pauline Stoltenberg

### Cloud 8

Major and Linda Avignon  
Mr. and Mrs. C. N. Chamberlain  
Chuck Gustafson  
Wendell and Madelyn Harter  
Guy and Judy Hatlie  
Walt and Carole Kilmanas  
Susan Knudson and Don MacKenzie

Alden and Jane Munson  
Jim and Debbie Mutton  
Frank and Elfriede Ryhlick  
Bertha St. Jean  
Bear and Ginny Thorkelson  
Ron and Sheila Troupe

### Cloud 7



Randy and Kathie Avakian  
Rob and Jan Barber  
Dennis and Chris Beebe  
Virgil and Lois Bourgon  
Bob and Susan Bradburn  
Dave and Bertha Bradburn  
Bob and Mary Ann Brigham  
Barney Brogan  
Kathy and Steve Campbell  
Doug and Diane Carter  
Neil and Sharon Cascadden  
Frank and Evelyn Cochran  
George and Pam Conde  
Martha Crommett and  
Bob Willett  
John and Nancy Jo Doughty  
Chuck and Midge Downer  
Tom Downs  
Dave and Elaine Eller  
Don and Nancy Ely  
John and Phyllis Ferl  
Kim and Sam Foster  
Barbara Hammer  
Baird and Edith Harris  
Dave and Lynn Harris  
Rick Hefner

Jim and Liz Henry  
Marge and Glen Hester  
Hines Family  
Sam and Carol Hitchcock  
Hoover Family  
John and Carole Hugunin  
George and Nancy Jackson  
Doris Louise Johnson  
Ann M. Jones  
Bob and Carol Jones  
Warren and Barbara Jones  
Paul and Elaine Jordan  
Scott and Rosie Karlin  
Vern and Susan Karlin  
Genevieve Kiser  
Bob and Bev Knowles  
Lois Kravett  
Carol Krienke  
Constantine and Mary Lackides  
Dimitri and Sigrid Lambros  
Rick and Donna Learned  
John and Linda Mack  
Joanne and Ralph Mailloux  
McDermott Family  
John McIntyre  
Jane Meyers

Jeffrey Mullin  
Michael Neary  
Jone and William Osborn  
Noel and Sally Palm  
Pat Pape  
Dick and Virginia Perkins  
Dorothy Pierson  
Eileen Quass  
Bob and Sylvia Raban  
Richards Family  
Dean and Janet Romein  
Dick and Anne Rose  
Andrea Russell  
Ray Russell  
Chuck and Ro Schreiner  
Heinie and Doris Shaw  
Kurt and Betty Simon  
Paul and Sue Sterba  
Russ and Trish Stewart  
Mel, Patty and Erin Takata  
Cathy, Marc and  
Robin Teitelbaum  
Weiner Family  
Hugh and Barbara Wells  
Iva Wood







TO THE CAST AND CREW OF  
"SOUND OF MUSIC"  
**BREAK A LEG!**  
LOTS OF LOVE  
LOIS (MARIA)

**PAUL GARRETT**  
*Video Productions*

(310) 643-0056

Affiliate Offices in Texas, Washington D. C., New York,  
California, Germany, Japan, Belgium, France,  
Spain, Netherlands & Mexico

*James L. Andion*  
— Attorney at Law —

Ofc. (213) 261-4125  
Fax (213) 687-3841

**FREE**  
**5 HOURS OF LONG DISTANCE**  
**CALLS EVERY YEAR!**  
NO FEES, NO EXTRA BILLS, FREE  
TRAVEL CARDS, STATE-OF-THE ART QUALITY  
**CALL NOW TO SAVE!**  
ANNETTE ABRAM 288-8017





**D. L. Harris & Associates**  
**Insurance Services, Inc.**  
 Estate, Business and Insurance Planning

David L. Harris, Ph.D.  
 President

Transamerica Center 0062  
 149 South Broadway, B-1  
 Los Angeles, CA 90015-2214  
 (213) 742-3605  
 Fax (213) 742-2269

*Robin Smith*

ORTHOPEDIC & TMJ  
 PHYSICAL THERAPY SERVICES  
 500 S. Sepulveda, Suite 104  
 Manhattan Beach, California 90266  
 (310) 376-4174

**doug carter** PHOTOGRAPHY



PORTRAITS • WEDDINGS • COMMERCIAL  
 (310) 379-6403



**MAIL BOXES ETC.®**

**We're The Biggest Because We Do It Right!™**



COPIES



SHIPPING



PASSPORT  
 PHOTOS



PACKAGING



OVERNIGHT



WESTERN  
 UNION



MAIL  
 SERVICE



FAX



NOTARY

UPS Authorized Shipping Outlet

1601 N. Sepulveda Blvd.  
 Manhattan Beach  
 Ph. 545-1260 FAX 545-6119

Hours:  
 8-6 Mon-Fri  
 9-4 Saturday

Carol & Gary Granger-Owners

**ABL MORTGAGE**  
 REAL ESTATE LOANS

**STEPHEN J. BATEMAN**  
 PRESIDENT

2615 PACIFIC COAST HIGHWAY  
 SUITE 301  
 HERMOSA BEACH, CA 90254

BUS: (310) 372-6696  
 FAX: (310) 372-8597

100% cotton knit women's clothing



Custom Made  
 for you!

VALERIE RAE  
 FASHION CONSULTANT  
 310 546-1253  
 MANHATTAN BEACH, CALIFORNIA



**HILLSIDE**  
PHARMACY

Ron Otto  
Lyndall L. Otto  
2407 N Sepulveda Blvd  
Manhattan Beach  
California 90266  
310.545.5685

Business Hours  
Monday-Friday  
9:00 AM-7:00 PM  
Saturday  
9:00 AM-2:00 PM

TO MY GREAT FAMILY:  
DADDY, MOMMY, LIESL, FRIEDRICH,  
KURT, BRIGITTA, MARK,  
MARTA, & GRETL

LOVE LOUISA



BREAK A LEG!

**GOOD LUCK  
TO THE CAST AND CREW  
OF**

**"SOUND OF MUSIC"**



**3 for the Show**

P.O. Box 6011, No. Hollywood, CA 91603

DIANA  
LIEKUS  
(818) 960-4467

LOIS  
BOURGON  
(213) 379-8568

SUE  
NEVENS  
(818) 905-9942

**A VARIETY SHOW FOR  
ALL REASONS!**



*Gareth, Michele, Ben,  
Katie, Roger,  
Brittany, Shannon...*

**YOU'RE THE GREATEST!**

*Your big sister,*

*Julie*



**Best Wishes To  
Brittany ("Marta")**



from

**Katie Kaschak**

**MARY A. VASSILAKIS**  
ARCHITECT

•Residential•Light Commercial  
•New Construction•Remodels•Additions

REDONDO BEACH, CA  
310-370-6049

## Retirement Planning Specialist



**Dianne M. Bishop, CFP**  
*Business and Financial Advisor*

### FINANCIAL NETWORK INVESTMENT CORPORATION

1025 W. 190th St., Suite 120  
Gardena, CA 90248  
(310) 329-5150



**CONGRATULATIONS...**

**Allie & Frank O'Leary**



OFFICE SUPPLIES · CARDS · GIFTS

**DAVE HORNBECKER**  
13101 545-5619  
13101 546-2221

1838 N. SEPULVEDA BLVD.  
MANHATTAN BEACH  
CALIFORNIA 90266

RESIDENTIAL  
COMMERCIAL

NEW CONSTRUCTION  
EXPERT RENOVATIONS

**SIDNEY M ADAMS**

*GENERAL CONTRACTOR*  
*B 495080*

*SERVING THE SOUTH  
BAY SINCE 1979*

*BUS/FAK (310) 375-4111  
RES (310) 373-0111*



SEARCHING FOR  
HIGHER INTEREST  
AND  
FREE CHECKING?



ASK US TODAY!!  
Bring in this coupon for  
200 free Coast Design checks.

**COAST FEDERAL BANK**

A GREAT PLACE TO BANK™

Manhattan Beach  
700 S. Sepulveda Blvd.  
(310) 376-0463

Corner at Artesia  
and Sepulveda St.  
Serving you in  
Manhattan Beach  
since 1963!!



441 2nd St.  
Manhattan Beach  
CA 90266



**ABOUT ME!** ®

- Personalized Books for Kids & Adults
- Personalized Music Tapes
- Custom Musical Ragdolls
  - Santa • Bunny • Jamaican
  - Blond • Brunette • Redhead

Carla Kirby, M.A.  
Reading Specialist

(310) 379-5893  
Fax: 379-5345

## VOICE INSTRUCTION

Basic and Advanced  
Singing Technique

Performance Coaching

**R. Laurence Shorer, M.M**  
**(310) 545-1836**

AIR - STEAMSHIP - BUS - RAIL - TOURS

*Ladera* TRAVEL SERVICE Inc.



**(310) 640-0527 (213) 772-1511**

2041 Rosecrans Avenue, Suite 103  
El Segundo, California, 90245

*Milli Anthony*

CRUISE & TOUR SPECIALIST  
HOME (310) 376-7683

- Computer Consulting/Training
- Self-Service Computers
- Secretarial & FAX Service
- Proposals & Presentations
- Desktop Publishing
- Mail List Maintenance



The  
**OfficeWORKS**

2100 N. Sepulveda Blvd, Suite 38  
Manhattan Beach, CA 90266  
(310) 546-6766 ■ 545-2493 FAX

"Your one-stop  
business support center"

 MARY KAY.

**Deborah L. Hofreiter**  
Independent Professional Beauty Consultant

15 Cordoba Ct.  
Manhattan Beach, CA 90266  
(310) 546-1707



Commercial • Residential

#87 DOUG HAMMER

FAX (310) 782-1483  
Ron Dymek, Manager

780-1141  
370-0940  
835-7614

# NO ONE SHOULD HAVE TO FACE LIFE ALONE.

Your satisfaction with your life insurance is directly related to the amount of counsel, advice and service you can expect to receive from your insurer.

So at Transamerica we set the highest priority on a personalized involvement that is rare these days. We've created one of the widest varieties of term and universal life products, pension and retirement plans available today. And a second-to-die program that other insurers wish they'd thought of first.

For more information, call. Or complete and mail the coupon below.

Tell me more about Transamerica.

Name \_\_\_\_\_  
Address \_\_\_\_\_  
City \_\_\_\_\_  
State \_\_\_\_\_ Zip \_\_\_\_\_  
Phone \_\_\_\_\_

**TRANSAMERICA  
LIFE COMPANIES**  
Transamerica Life Insurance Company  
THE POWER OF THE PYRAMID  
IS WORKING FOR YOU!

© 1991 Transamerica Life Companies



**CROWN SERVICE  
CHEM-DRY**

*"An Excellent Value"*  
*10% off with*  
*this Ad*  
310-325-7985  
800-273-3525

CLEANING CARPETS AROUND THE WORLD

CUSTOM WEDDING PHOTOGRAPHY  
JUST FOR YOU

*Hanson's Studio*

518 PIER AVE.  
HERMOSA BEACH, CA 90254

BY APPOINTMENT ONLY

(310) 376-1522

Go with a neighbor  
who *knows*  
the neighborhood...

**Stacey Dennis-Jelmini**

**Homestead Realty\***

350 N Sepulveda Blvd  
Manhattan Beach 90266  
(310) 376-9464

\*24 years of service to Manhattan Beach  
& surrounding South Bay cities

**FREE** no obligation evaluation  
of your equity status with this ad

*Specializing in hard work  
with old fashioned integrity*

Developmental Toys, Books and Games For All Ages



- Home Demonstrations
- Catalog & Phone Orders
- Part Time & Full Time Career Opportunities
- The NEW BOOK OF KNOWLEDGE Encyclopedia Set

**Tracey Yoshida**  
Educational Consultant

5468 W. 121<sup>st</sup> Street • Hawthorne, CA 90250 • (310) 643-6862

DE ANNE JOHNSON  
(310) 374-8979



**Image Expo**

FOR MEN AND WOMEN

976 ARTESIA BLVD.  
HERMOSA BEACH, CA 90254

**310-379-8783**

**Roz De'Prey**  
Senior Accountant

124 No. Sepulveda Blvd.  
Manhattan Beach, CA 90266

PROFESSIONAL GROUP

Bonded Insured

**BAY CITIES ROOFING**

State Lic. #579127

REROOFING - ROOF REPAIR  
ALL TYPES OF ROOFING

2509 Pacific Coast Hwy., #106  
Hermosa Beach, CA 90254  
(310) 376-8579  
FAX (310) 318-6552

Peter Crest

Bunny, Graham & Shannon  
send their best wishes from . . .



**Edinburgh Lodge**

Ashland, Oregon  
1-800-643-4434





**CONGRATULATIONS  
AVIGNONS!**

***Commercial Printing  
at its Best***

**Rose and John Osten**

213/321-0787  
800/794-1969  
Fax: 310/217-1767

16124 South Figueroa Street  
Gardena, California 90248



**Barbara Fine, Ph.D.**  
Adult and Child Psychotherapy

310-379-4501  
M.F.C.C. # Lic. MC 23610

1050 Duncan Avenue, Suite G  
Manhattan Beach, CA 90266

If you like us at the Dixieland  
Service, you'll LOVE us at your

THE Party!



OFFICIAL BAND OF  
MANHATTAN BEACH

Bob White  
310-376-2591

## **KARL'S MAINTENANCE SERVICE**

**Home Renovations and Repair**

**Roof Leaks • Carpentry  
Plumbing • Concrete/Tile Work**

Licensed • No Job Too Small  
Local References • Free Estimates

Senior Citizen Discount  
European Craftsmanship

**(310) 821-4097**



The Campbell Family

Extends Best Wishes

To the Von Trapp Family

for a Great Show!

Kathy, Steve, Brad, Ryan,  
Corey & K.C.

Stephen R. Campbell  
*Senior Vice President - Investments*

**PaineWebber**

Consumer Markets  
PaineWebber Incorporated  
2029 Century Park East, Suite 2950  
Los Angeles, CA 90067

(213) 282-7000



**AMERICAN INSTANT SIGNS**


JOE ISAO SHITARA  
(310) 324-0347  
Fax (310) 324-0681

**COMPU-BANNER**

"Instant Signs, Banners 'n Balloons"  
Graphics • Engraved Signs • Business Cards • Laminations  
Rubber Stamps • Helium Tank Rentals • Party Banners

2210 Marine Avenue #F      Gardena, CA 90249

**Coastline Chiropractic**



**Dr. Scott Tannehill**  
Chiropractor

3770 Highland #105  
Manhattan Beach, California 90266

**310-546-8811**



**CLEANERS INC.**

LAUNDRY SERVICE  
LEATHER & SUEDE  
DRAPERIES  
(Taken Down & Re-Hung NO CHARGE)  
ALTERATIONS  
WEDDING GOWNS

Established Since 1923

**IN BY 11 AM OUT BY 3 PM  
MONDAY THRU FRIDAY  
NO EXTRA CHARGE**

**HAND FINISHED SHIRT LAUNDRY ON PREMISES**  
ONLY STATE CERTIFIED CLEANERS IN SOUTH BAY

**546-1904**

1904 N. SEPULVEDA BLVD. MANHATTAN BEACH  
(BETWEEN MARINE & MANHATTAN BEACH BLVD.)

**HOURS**  
MON-FRI  
8AM - 7PM  
SATURDAY  
8AM - 5 PM





# RIVIERA TUXEDO

*South Bay's Leader  
In Formalwear  
Rentals & Sales*

RIVIERA



TUXEDO

Official supplier of  
Captain Von Trapp's Tuxedo

1822 N. SEPULVEDA

Judy  
Schuster  
Graphics

Artist/Designer  
(310) 545-3995

212 18th Street  
Manhattan Beach  
CA 90266



**STEPHEN G. BARR & ASSOCIATES**

Real Estates Appraisers & Consultants

**MARK HAMMER**

Vice President

1026 Manhattan Beach Blvd.  
Suite D  
Manhattan Beach, CA 90266

(310) 796-0407  
Fax (310) 546-9727  
Pager (310) 501-3284



**SURF SHARPENING**

1456 11th Street  
Manhattan Beach, CA 90266

BILL WOODALL

213-372-182  
213-376-322

**THE HEALING CENTER**

ASSISTING PEOPLE TO ATTAIN  
THEIR NATURAL ORDER

**Putting people in order who  
are out of order®**

TRAGER®

SPORTS MASSAGE • MEDICAL ACUPUNCTURE  
THERAPEUTIC EXERCISE • NEUROMUSCULAR RE-EDUCATION  
DEEP TSSUE REALIGNMENT • CIRCULATORY MASSAGE  
STRESS MANAGEMENT  
CHIROPRACTIC MENTASTICS®

**310•376•7729**

555 PIER AVENUE • SUITE ONE • HERMOSA BEACH • CALIFORNIA  
VISA/MASTERCARD AND MOST INSURANCE ACCEPTED



B-E-A-C-H-C-O-M-B-E-R  
**HAIR SALON**

FRANCES

2205 N. SEPULVEDA BOULEVARD  
MANHATTAN BEACH, CA 90266  
(310) 545-5713



*Well Spoken*  
**The**  
**march**  
**Hall**  
 604 W. Sepulveda Blvd., Manhattan Beach,  
 California 90266 • (310) 379-2442

**WHEN YOU NEED QUALITY PRINTING  
 FAX AND COPY SERVICES**

**BUSINESS  
 OVERLOAD  
 SUPPORT  
 SERVICES** **BOSS**

806 Manhattan Beach Blvd., Suite 101  
 Manhattan Beach, Calif. 90266

**DON CAMPBELL** (310) 379-9515  
 FAX (310) 379-1954

**RE/MAX**  
 Beach Cities Realty  
 Independently Owned and Operated

**NEIL CASCADDEN (GRI)**  
 Associate Broker

7298 W. Manchester Avenue  
 Westchester, California 90045  
 Office: (310) 645-8455 Ext. 107  
 Residence: (310) 548-5339  
 Fax: (310) 670-9672

**Roger DuPont & Associates**

**Roger DuPont**

**Architecture/Planning**  
 1846 9th Street, Manhattan Beach, CA 90266 • 213-376-2227





MUSIC INSTRUCTION  
classroom chorus and private piano  
Heidi Johnson  
B.A. in Music  
376-7097

Lisa Turner  
Skin & Nail Care Consultant

District Manager

Jafra

A PRODUCT A CONCEPT AN OPPORTUNITY

Call for complimentary  
facial or makeover.  
2811 W. 180th Street  
Torrance, CA 90504  
(310) 329-3472

*Andrea Comroe, d.d.s.*  
GENERAL DENTISTRY

(310) 643-6221

11976 Aviation Boulevard  
El Segundo, CA 90304

CAST + CREW

(310) 318-5464

(310) 545-2300

Warmest

MARTHA WEBB CROMMETT, Ph.D.

Individual, Couple and Group Psychotherapy

1050 Duncan Ave.  
Suite G

Manhattan Beach, CA 90286

MFCC No. 6949

*Congratulations!*

# NYLUND'S NEWS

*Poor Dick's Almanac*

## UNDERSTANDING FINANCING & REFINANCING

Many articles relate that it can be confusing to a borrower on which type of loan to obtain. I make it a policy to put the borrower in a loan that's "right for them" and work with the Realtor to close swiftly.

### FINANCING NEW LOANS

**VARIABLE LOANS** - at a 4.6% start rate, doors are opened that had been previously closed to some prospective borrowers due to high ratios - this is a payment controlled loan designed for first time buyers and others with limited cash flow with graduated payments - EZ to qualify.

**FIXED LOANS** - at rates as low as 7.0%. Fixed rates certainly should be considered, if borrower qualifies. Stringent underwriting.

### REFINANCING OLD LOAN

**VARIABLE LOANS** - in many cases, a borrower can pull out cash and lower their payments. This is an ideal loan for someone looking to improve their cash flow.

**FIXED LOANS** - our formula shows at 1% lower interest rate, costs are recovered in 18 months. Makes good sense to avoid variable increases.

As you can see different types of loans are designed to fit specific situations. Call for details on how we can help you.



**RICHARD NYLUND, GRI.**  
SENIOR LOAN CONSULTANT

Member of the Million Dollar Club  
Office 326-4800 • FAX: 326-060  
Residence: 541-7553 • Car 819-740

# THE WAY TO TRAVEL

*Owners:*

*Rita Koch*

*Joanne Mailloux*

*Marge Hester*

---

---

*We would enjoy working with you on  
Leisure, Corporate, Incentive, or Group Travel.*

*Call us for quotes on all Air Tickets, Discounted Cruises, Club Med,  
Tour, Ski and Golf Packages, Airline Senior Discount Coupon Books,  
Hotels, Rental Cars, Amtrak.*

*"We will not be undersold!"*

*Agency Hours: Mon. - Fri. 9:00 a.m. to 5:30 p.m.*

---

---

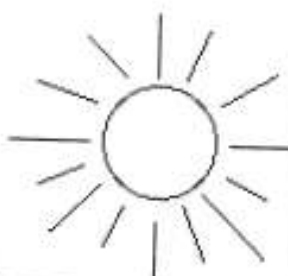
*2309 Pacific Coast Highway, Ste.101  
Hermosa Beach, CA. 90254*

*(310) 376-8992*

*(800) 678-8992*

*FAX: (310) 374-5170*

**Condo in sunny  
Rancho Mirage**



7 pools  
7 spas



Beautiful walking,  
biking areas

Year-round rentals  
3 bedrooms  
2 bedrooms

patio  
barbeque  
tennis courts  
TV, vcr

Weekend	Weekly (7 days)
2-6 people \$200-\$260	2-6 people \$500-\$700

Call **BILL & LOIS WOODALL**  
(310) 372-1827

CONGRATS TO A FEW OF MY FAVORITE

**ANNETTE ABRAM**  
Real Estate Loans

**379 - 4000**

<b>FREE</b> PERSONAL CONSULTATION & PRE-QUALIFICATION <i>Free Up Cash For Any Purpose</i>	<b>\$250 OFF</b> CLOSING COST AT FUNDING <i>0 Point Loans Available</i> VALID TILL 8/31/91
--	--

*West Coast Funding Group*

111 N. SEPULVEDA BLVD.  
SUITE 150  
MARBATAJ BEACH, CA

*A special "Thank You"  
to the Cast & Crew  
for their many hours of  
dedication to the success of  
"The Sound Of Music"*

*Lyle & Pauline*



# Frances'

*Weekend Wear*

*Career Clothing*

*Special Occasion Dressing*

*Featuring a vast array  
of accessories*

227 Manhattan Beach Blvd.  
Manhattan Beach, CA 90266  
(310) 545-4200

• *Women's*  
**Contemporary**  
•  
•  
**Clothing**  
•

*Alteration Service Available*

# foote fetish

Footwear For  
All Occasions

Handbags

Hosiery

Designer  
Sunglasses

Costume  
Jewelry

**WOMEN'S  
SPECIALTY SHOE SALON**

219 Manhattan Beach Blvd., Manhattan Beach, CA 90266 / 310 • 545 • 2977

# EVERPURE<sup>®</sup>

## DRINKING WATER SYSTEMS

### Drinking Water "Better than Bottled" WATER FILTER SYSTEMS

• Removes foul tastes and odors including chlorine • Half micron filtration provides sparkling clear "better than bottled" water clearer taste-free ice cubes • Provides great tasting water without altering natural mineral content • When connected to other appliances will prolong their life by inhibiting limescale build-up • Maintenance free system with disposable cartridges that can be changed without tools or mess in less than a minute.

CONTAMINANT REDUCTION	MODEL H-100™	MODEL H-200™	OC4 THM™
TASTE & ODOR	✓	✓	✓
CHLORINE	✓	✓	✓
CHLORAMINES	-	✓	✓
LIMESCALE INHIBITION	✓	✓	✓
PROTOZOAN & AMOEBA CYSTS	✓	✓	✓
ASBESTOS FIBERS	✓	✓	✓
ORGANIC CHEMICALS	-	✓	✓
Rating	1/2 micron	1/2 micron	1/2 micron

The Everpure Systems listed above meet these National Sanitation Foundation Standards for Drinking Water Treatment Units

Standard No. 42: Aesthetic Effects  
Chemical Line  
Taste & Odor Reduction  
Scale & Corrosion Inhibition  
(meets OC4-5C)  
Particulate Reduction Line  
Filtration Rating: 1/2 micron



Standard No. 53 Health Effects  
Chemical Line (OC4-5C only)  
Total Trihalomethanes Reduction  
1380-940ppb challenge  
Mechanical Filtration Line  
Cl<sub>2</sub> Reduction  
Turbidity Reduction

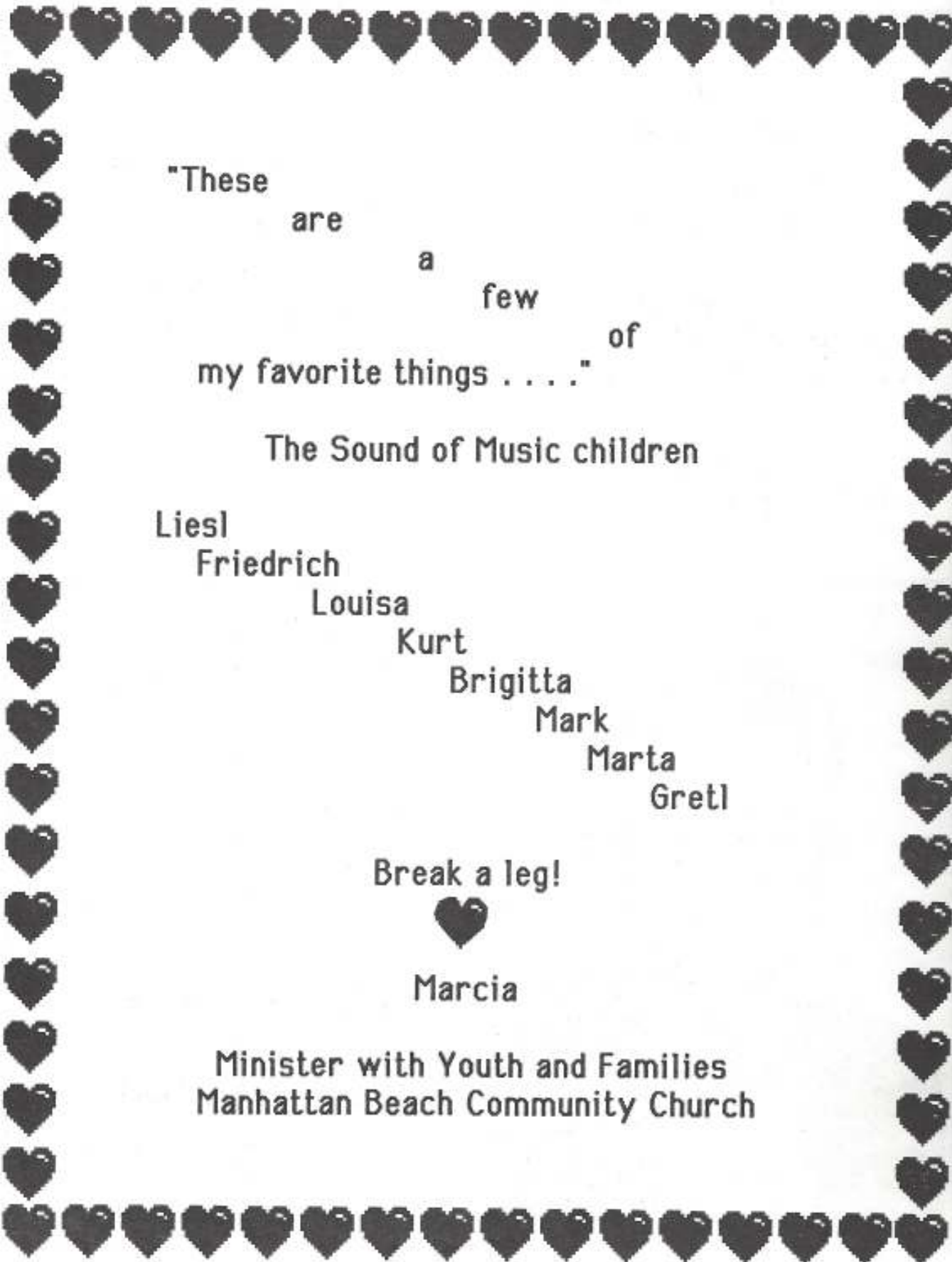


EVERPURE<sup>®</sup>



## AVAILABLE LOCALLY AT:

- South Bay Sales & Service
- Redondo Trading Post
- Windsor Plumbing
- Hank the Plumber



"These  
are  
a  
few  
of  
my favorite things . . . ."

The Sound of Music children

Liesl  
Friedrich  
Louisa  
Kurt  
Brigitta  
Mark  
Marta  
Gretl

Break a leg!



Marcia

Minister with Youth and Families  
Manhattan Beach Community Church



**An  
Awed couple  
Neil and Sharon  
Cascadden**

**Congratulate  
and the cast and crew of  
"THE SOUND OF MUSIC"**

**For an  
AWESOME PRODUCTION**

**If you are thinking about:**

- *Relocating,*
- *Changing homes without increasing property tax,*
- *Taking your one time tax exemption when you sell your residence,*
- *Buying your first home,*
- *Preparing to sell your home,*
- **OR - IF YOU HAVE OTHER REAL ESTATE QUESTIONS,**

**Call NEIL**



**Do you know that  
RE/MAX Beach Cities Realty has  
Housing Assistance Programs  
for employees of  
many local companies?**

**Call and find out how  
Manhattan Beach Community  
Church can benefit from  
your next real estate transaction  
and how you may save.**

**NEIL CASCADDEN  
RE/MAX  
Beach Cities Realty**

**Office: (310) 645-6455, ext. 107  
Home: (310) 546-5339**