



**YOU  
CAN'T TAKE IT WITH  
YOU**



SYNTHETIC LUBRICANTS  
HOME & OFFICE WATER FILTERS

**ED DEAN**  
AMS/OIL DEALER

201 N. Dianthus St.  
Manhattan Beach, CA 90266  
213-374-1301

*Olive H.  
Stegler*

*designs from  
Oz*

POTTER - ARTIST

1825 PROSPECT AVE.  
HERMOSA BEACH, CA.  
(213) 374-0069



**AXMINSTER** *Pharmacy*

4324 West Slauson  
Los Angeles, CA 90043

(213) 294-7153

**VERN KNUDSON**  
Pharm. D.

WHEN YOU NEED QUALITY PRINTING

BUSINESS  
OVERLOAD  
SUPPORT  
SERVICES

**BOSS**

806 Manhattan Beach Blvd., Suite 101  
Manhattan Beach, Calif. 90266

DON CAMPBELL

(213) 379-9515  
(213) 379-6205

**SKI SURF SHOP**

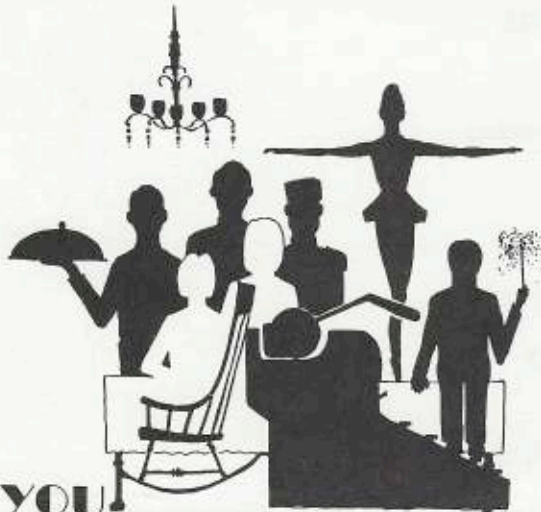
1765 ARTESIA BOULEVARD MANHATTAN BEACH, CA 90266  
(213) 379-2312

SNOW SKIING WATER SKIING  
RENTALS TENNIS

JAMES POST INSURANCE

LYN COULTER

2368 Torrance Blvd.  
Torrance, California 90501  
(213) 328-3622 (213) 775-1514



**YOU!  
CAN'T TAKE IT WITH  
YOU**

Comedy in two acts

by Moss Hart and George S. Kaufman

A 1985 Mariners Club Production  
Manhattan Beach Community Church  
303 South Peck Avenue

November 1 & 2  
8 & 9

**MIDAS**  
Manhattan • Hermosa

**MUFFLER & SHOCK ABSORBER SPECIALISTS**

**Bill Switzer**

3125 Pacific Coast Highway  
Hermosa Beach  
376-8735

GUITAR • BASS GUITAR

**KURT MAYO**  
INSTRUCTOR • PERFORMER

STUDIOS:  
Manhattan Beach 213 545-3994  
Torrance 213 320-0246

CARPET AND UPHOLSTERY STEAM CLEANING

**HILL AND HILL DRAPERIES  
AND CARPETS**  
*Cleaning and Sales*

KEN HILL  
PRESIDENT

PHONE 295-4168  
3215 W. 54TH STREET  
LOS ANGELES, CALIF. 90043

**THE  
BIKE  
SHOP**

Better Bicycles and  
Fitness Equipment


430 Pier Avenue  
Hermosa Beach, CA 90254  
(213) 376-2914



The First And Original  
**LONDON TOWNE FLOWERS**

200 North Aviation Blvd.  
Manhattan Beach, CA 90266  
Open Daily 8:30 AM - 7:00 PM  
Sunday 9:00 - 4:00 PM

(213) 376-5134  
379-8544



I.P.A.T., C.A.P.A.  
C.C.P.T.A., C.C.P.A.A.

*Norma Van Nice*  
*Porcelain Art Teacher*

1550 FIRST STREET  
MANHATTAN BEACH, CA 90266 (213) 379-6976

## CAST

(in order of appearance)

Penelope Sycamore ..... Rita Koch  
 Essie Carmichael ..... Susan Blackwell-Brown  
 Rheba ..... Evelyn Belt  
 Paul Sycamore ..... Guy Hatlie  
 Mr. De Pinna ..... Ron Koch  
 Ed Carmichael ..... Sam Hitchcock  
 Donald ..... Graham Lewis  
 Martin Vanderhof, "Grandpa" ..... Charlie Stowe  
 Alice ..... Bunny Lewis  
 Henderson ..... Stephen Norris  
 Tony Kirby ..... Roger Book  
 Boris Kolenkhov ..... J.C. Edwards  
 Gay Wellington ..... Ann Gere  
 (Nov. 1 & 2)  
 Gay Wellington ..... Sally Stowe  
 (Nov. 8 & 9)  
 Mr. Kirby ..... George Hammer  
 Mrs. Kirby ..... Lyn Coulter  
 Three "J" Men ..... }  
 Vic Jeter  
 Joe Radinsky  
 Irving Forbush  
 Grand Duchess Olga Katrina ..... Barbara Hammer

## OUR FAMILY IS GROWING TO SERVE YOURS BETTER.



**Redondo Beach  
Medical Group**  
502 Torrance Blvd.  
Redondo Beach  
316-0811

**Bay Shores  
Medical Group**  
28633 S. Western Ave.  
San Pedro  
547-3384

**Bay Shores  
Medical Group**  
20655 Western Ave.  
Torrance  
212-6555

**Bay Shores  
Medical Group**  
20501-A S. Avalon Blvd.  
Carson  
532-5315

**Bay Shores  
Medical Group**  
1200 Rosecrans Ave.  
Manhattan Beach  
640-8151

**Bay Shores  
Mental Health Group**  
901 Manhattan Beach Blvd.  
Manhattan Beach  
546-5711

### FROM THE PRODUCERS

On behalf of the cast and crew, welcome to the Mariner production of "You Can't Take It With You".

What you are about to see represents a considerable commitment on the part of our cast and crew and we thank them for their talents.

With so much to do in preparing for this production, we are in fear of not thanking everyone involved. If by chance you were not mentioned, our sincere apologies, and there's a rock in the church narthex available for throwing.

We hope you enjoy our production as much as we have enjoyed bringing it to you.

Jo and Rod Tyler  
Producers

### ACKNOWLEDGEMENTS

"You Can't Take It With You" was produced by special arrangement with DRAMATISTS PLAY SERVICE, INC., 440 Park Avenue South, New York, New York 10016.

A special thanks to Lyle Stoltenberg for his design and construction of our new stage staircase and also for his help to our neophyte producers.

Also a special thanks to Brad Crane for the use of his skull.

P.O. Box Rental 24 Hr. Availability  
TELEPHONE MESSAGE SERVICE



**MAIL STOP**

1116-A 8TH STREET  
MANHATTAN BEACH, CALIFORNIA 90266  
(NEXT TO SUPREME PAINTS)  
(213) 374-7544

PARCEL SHIPPING RECEIVING  
MAIL FORWARDING CALL IN MAIL CHECK

PAT & DEANNE JOHNSON, OWNERS

THINK OF US FOR HOLIDAY SHIPPING  
VIA U.P.S. & FEDERAL EXPRESS

**TOTAL IMAGE CONCEPTS**

**FEATURING:**

- Skincare & make up counseling
- Complete Hair Care
- Complete Nail Care
- Facials & Waxing
- Tanning Bed

Gift Certificates Available for all Services

ARTESIA at PROSPECT - 374-8979  
HERMOSA BEACH

DEANNE  
JOHNSON'S

**HAIR  
AFTER**



**IMAGE EXPO for Men & Women**





**TAYLOR JAY THOMPSON - Director**

This is the third MBCC production Taylor has directed (he'd sooner forget the other two). He was last seen on stage, if you can call it that, in "Guys and Dolls" here at MBCC in which, when he turned sideways, he couldn't be seen. Elsewhere he has appeared many times on stage: He played Hamlet (Hamlet lost) at El Camino College and was an anvil salesman in "The Music Man." He has a penchant for directing shows with short titles, such as "Stop the World, I Want to Get Off," "The Roar of the Greasepaint - the Smell of the Crowd," and "You're A Good Man, Charlie Brown." Taylor works for the City of Torrance Parks and Recreation Department, Social and Cultural Division as Coordinator of the Performing Arts section, having given up honest work forever. His future plans are to put in forty hours a week and retire.

**TENNA TUCKER (yes, folks, it's pronounced TEE-nuh) - Assistant Director**

Due to her close relationship with that famous star Tanya Turner, Ms. Tucker has been involved with theater for many years. Her stage appearances have been noted for one specific feature - she has never spoken a word on stage. The most recent shows include "Guys and Dolls" and "Carnival" with the MBCC. Her ability as a choreographer has until now been overlooked; fortunately, it continues to be overlooked. A year or so ago, Ms. Tucker appeared at the door of MBCC. Today we count the days until she is an MBCC star.



**EVELYN BELT - "Rheba"**

Although this is only Evelyn's third appearance "on stage" in an MBCC production, she has spent many a musical as rehearsal pianist or in the "pit" orchestra. She decided to see how it feels from the other side of the footlights in last fall's production of "Carnival," and appeared again as a "Hot Box Girl" in last spring's production of "Guys and Dolls." Her first love, though, remains the piano, which she has played since the age of four. She and her husband, Jim, and daughter, Elaine, are all active in the many phases of church life that MBCC offers.

**GUY HATLIE - "Paul Sycamore"**

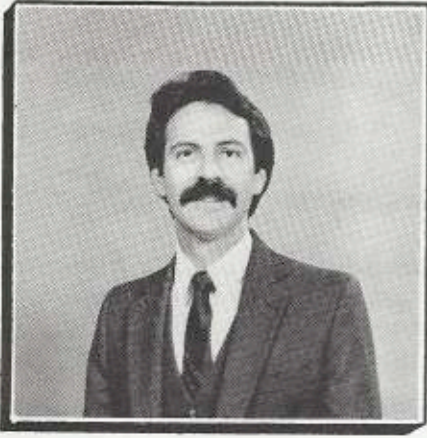
Guy has played character roles in the MBCC productions of "Delegate Applegate," "Damn Yankees," "Arsenic and Old Lace," "Applause," "Never Say Goodbye," and "Guys and Dolls."

Guy's objective has been to make memorable performances of rather "forgettable" characters. Those familiar with the above productions will understand that this objective continues to elude him. Paul Sycamore is no exception; he will continue to live in obscurity.

Guy is the past chairman of the Finance Board, Skipper of Mariners, and Moderator of the Church. Currently he "sings" with the choirs and is a member of the Board of Trustees.

Guy is a Division Controller for Hughes Aircraft Company. He and his wife Judy have two children.





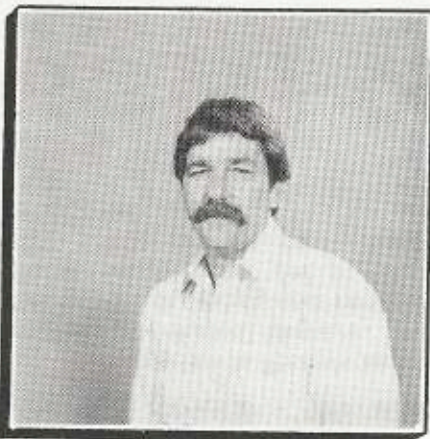
**VIC JETER - - "J Man"**

This is Vic's very first time on any stage anywhere. He showed up one night to help in any way he could behind the scenes and somehow ended up on stage. He looked pretty good as a "shady" character and ended up staying.

Vic has been at MBCC for about a year, and has worked at Hughes for the past 7 years. He is married to Debbie, and they have two lovely daughters, Tami, 7 and Cori, 3.

**JOE RADINSKY - "Mac"**

This is Joe's second appearance in an MBCC production (previously he was featured in the Fantasy Ballet sequence in "Carnival" last year). Elsewhere he has appeared on stage in productions of "Oklahoma," "Purlie Victorious," "The Sound of Money," "Toad," and as the Madam in "Butterfly." Joe is currently signed to star in a yet-to-be-written Broadway musical based on the memoirs of John Wilkes Booth. The role of "Mac" in "You Can't Take It With You" is, he says, his favorite role so far.



**GRAHAM LEWIS - "Donald"**

Making his MBCC stage debut, Graham has often been behind the video camera with a number of Mariner/Shipmate productions. His acting credits include a Wise Man, a Shepherd, and Joseph in Christmas dramas, "Aunt Emma Cleans Up" and "Sulphur and Molasses" in high school. Graham's favorite and most remembered role was that of a Tree in Burnhamwood in the Millsap College 1965 production of MacBeth.

Graham is the husband of Bunny Lewis and the father of three daughters.

**CHARLIE STOWE - "Grandpa"**

Maxim of the successful man: When he's being run out of town, he looks like he's leading a parade; it's all in the image.

This is Charlie's 28th year of involvement in MBCC productions, which makes him highly qualified for the role of the Sycamore patriarch. Fortunately, however, most of his other roles over these years have been non-appearances; he's usually found mingling with the off-stage snakes in the orchestra pit during musicals. A stereotyped loser, his rare on-stage musical appearances include "The Music Man" (Harold Hill), "I Do, I Do" (half the cast), and "Never Say Goodbye" (a hungry songwriter). In "talkies", his only major role was as the losing lawyer in "Night of Jan. 16th." As you see, he keeps his image intact as the senile philosopher of the Sycamore misfits. See you back in the pit next year, Charlie!



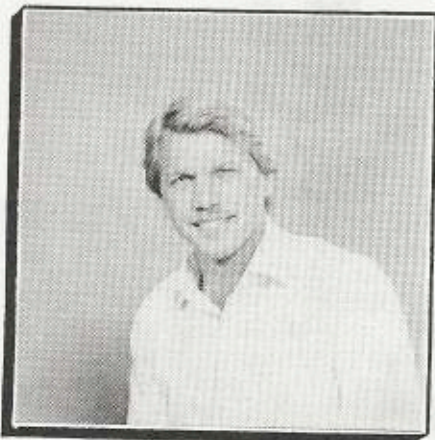


**ANN GERE - "Gay Wellington" (Nov. 1, 2)**

Another play — another character part! But what fun for Ann and Sally Stowe to share this one in their 25th year of theatrical association at MBCC. A highlight came when Ann directed "Never Say Goodbye" by Glenn Grossman, and then ventured away from us two years ago to do Aunt Eller in "Oklahoma" at El Camino College. A former speech and P.E. teacher at El Segundo High, Ann and husband Jim now travel, play tennis, and sail their Catalina 27'.

**SALLY STOWE - "Gay Wellington" (Nov. 8, 9)**

As a drunk "has-been" actress, Sally thinks the director surely cast the right lady. Sally has been "Dolly" at El Camino College and Redondo Beach and directed many MBCC musicals — and she does love a party! She also helps in a kindergarten in Torrance, directed a pre-school for 11 years at MBCC, is a sometimes Sunday school teacher, coordinates 21 teacher aides, and is a volunteer par excellence — and an all-around nice person. So says she — Charles (grandpa) loves her, too!



**ROGER BOOK - "Tony Kirby"**

Roger starred in the spring production of "Guys and Dolls" as the romantic lead, Sky Masterson. He again is playing the romantic lead, Tony Kirby, in "You Can't Take It With You." Not a bad type cast!

When Roger is not romanticizing on the stage he is traveling across the country as a National Sales Manager for P. Leiner Nutritional Products, a large vitamin manufacturer and marketer. He is also a songwriter, singer and guitarist. Roger became familiar with the stage during the '60s when he sang professionally in coffee houses in the Chicago area. Today he still performs his music whenever anybody asks.

**J. C. EDWARDS - "Boris Kolenkhov"**

J.C. spent the summer in Europe preparing for his role as Kolenkhov. The beard was successful, but alas, the Russian accent is a combination of Count Dracula and Jose Jimenez. Undismayed, J.C. is anxious to break out of his typecast roles as a drunk in "Guys and Dolls" and "Carnival" to play the proud but poor Russian ballet instructor. J.C. also played Teddy in "Arsenic and Old Lace," and some small parts in "Delegate Applegate" and "Damn Yankees" where he learned he could neither sing nor dance. He recently retired from the Air Force and went to work for TRW after he got bored of "Leave It To Beaver" reruns.

J.C. and his wife Pat were also Skippers of "Mariners" in 1980.





THE SYCAMORE FAMILY TREE



MARTIN  
(GRANDPA)  
VANDERHOF



PAUL  
SYCAMORE



PENELOPE  
VANDERHOF  
SYCAMORE



ANTHONY  
KIRBY,  
SR.



MIRIAM  
KIRBY



ED  
CARMICHAEL



ESSIE  
SYCAMORE  
CARMICHAEL



ALICE  
SYCAMORE



ANTHONY  
(TONY)  
KIRBY, JR.



BORIS  
KOLENHOV



GRAND  
DUCHESS  
OLGA  
KATRINA



RHEBA



DONALD



MISS  
GAY  
WELLINGTON



MR.  
DEPINNA



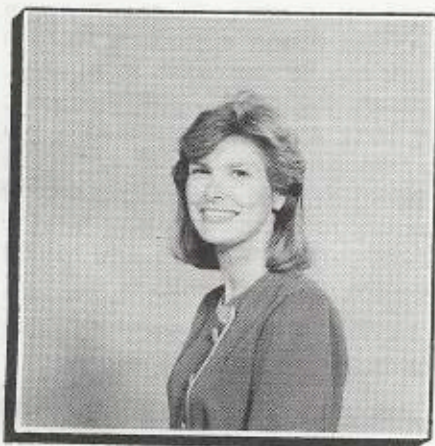
MISS  
GAY  
WELLINGTON



WILBUR  
HENDERSON



CHIEF

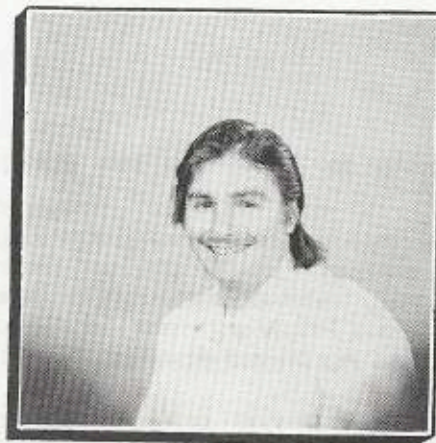


**BUNNY LEWIS - "Alice Sycamore"**

A four-and-a-half-year veteran of MBCC musicals, this is Bunny's debut as the ingenue. Bunny loves the theater and juggles being a wife, mother and nurse with productions at Manhattan Beach Community Church. After "Damn Yankees," "Applause," "Godspell" and most recently as a "Hot Box Girl" in "Guys and Dolls," Alice is her first non-musical role. Her biggest claim to fame is as "Nurse Bunny" for Ken and Bob Company of KABC Radio - EGBOK!

**STEPHEN NORRIS - "Mr. Henderson"**

The theatre is Steve's second home. He is a man of many hats when it comes to technical theatre. Set design and building, light design and operations, sound design and recording are just some of Steve's talents. He is Technical Director for El Camino College Fine Arts Department and the City of Torrance's Performing Arts Department. "Henderson" is Steve's acting debut.



**GEORGE HAMMER - "Mr. Kirby"**

George has been involved in MBCC productions since their formative years in the early 1950s. Playing drums with the pit band in the first two years of the Brown-Grossman era, he liked what he saw going on on-stage, and moved in that direction for appearances in the "Delegate Applegate" and "Music Man" productions.

His return, beginning in 1975, to the MBCC stage was in "The Man Who Came To Dinner" in a supporting role, and since then he has been active in 10 of the last 11 years in Mariner and Shipmate productions.

George's favorite roles were as Newton Fuller in "George Washington Slept Here," the Governor-Innkeeper in "Man of La Mancha" and manager of the Washington Senators in "Damn Yankees."

He recently retired from McDonnell-Douglas Aircraft Co. after 33 years in aerospace work.

**LYN COULTER - "Mrs. Kirby"**

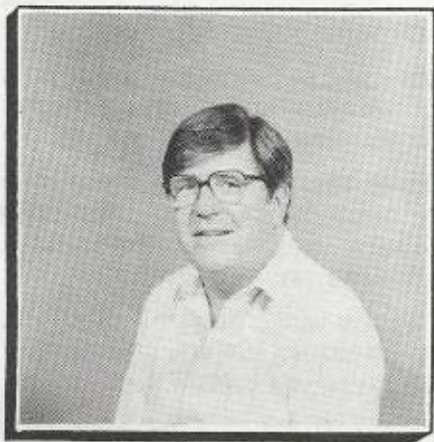
Lyn has appeared in almost every MBCC musical, <sup>including the original American Music Man Production</sup> starring in "Applause" and "How to Succeed," with a supporting role in "Damn Yankees." She has shared her choreographic abilities over the years, with particular note to the Crapshooters of "Guys and Dolls."

*year's library scene.*

*In her "other life" she is mother of five, grandmother of three, and a full time insurance agent working in Los Angeles who prefers working as a hobby.*

*Lyn loves the sequins, the spotlight and the Mariner "company!"*



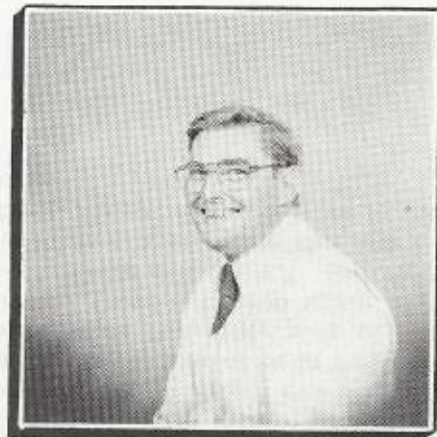


**RON KOCH - "Mr. De Pinna"**

This is Ron's first performance in a "talkie." His previous experience was in the MBCC musicals, "Man of La Mancha," "Delegate Applegate," "Damn Yankees," "Applause," and "Guys and Dolls." He served as producer for "I Do, I Do," and set manager for "Dear Phoebe." Ron and wife Rita, playing Penny, have again shared rides or walks to rehearsals.

**SAM HITCHCOCK - "Edward Carmichael"**

Sam began his career at MBCC working with the stage crew and singing in the chorus in "Never Say Goodbye," "Carnival," and "Guys and Dolls." His entire family participated in "Carnival" last year, and his wife Carol is doing makeup again this year. Sam is a member of the Contemporary Chorale and the father of two lovely girls.



**BARBARA HAMMER - "Grand Duchess Olga Katrina"**

Barbara won't tell us how far but she goes way back to the first old Mariner Talent Shows. Since then she's done many parts in both musicals and plays for us. Her favorites among her many roles were Magda in "Night of Jan. 16," Miss Willie in "Curious Savage," Mother Abbess in "Sound of Music," General Cartwright in "Guys & Dolls," and Mrs. Parrish in "Dear Phoebe." After many years of directing and singing Barbara uses those talents by the direction of four choruses and coaching our singers in the musicals. As a retired teacher she says she has just a little more spare time lately.



**IRVING FORBUSH - "Jim"**

Irv's list of stage appearances runs as long as your arm and is about half as impressive. He auditioned for "Guys and Dolls" at MBCC earlier this year and was the only person not cast. He has played a Spear-Carrier in "Hamlet" and was a dancing worm in a school play which he doesn't remember. Irv has taught several courses in Theatre Arts at El Camino College, most notably a workshop called "Acting on the Right Side of the Brain," and is the author of the worst-selling book, "Nonverbal Communication: What Can You Say About it?" He has been looking forward to playing "Jim" in this production because it gives him an opportunity to speak a line on stage.



(in order of appearance)



**RITA KOCH - "Penelope Sycamore"**

Rita Koch, star of stage (put her on the next one out of town, please), screen ("Damn those flies") and radio (so what if it was a farm station in middle America?), only accompanied her husband Ron to auditions because the call went out more men were needed! Well anyway, she surely has had many theatrical experiences at MBCC, starring in "I Do, I Do" and "Delegate Applegate," and with minor roles in "Applause," "Sound of Music" and "Guys and Dolls" (we're really talking minor role)!

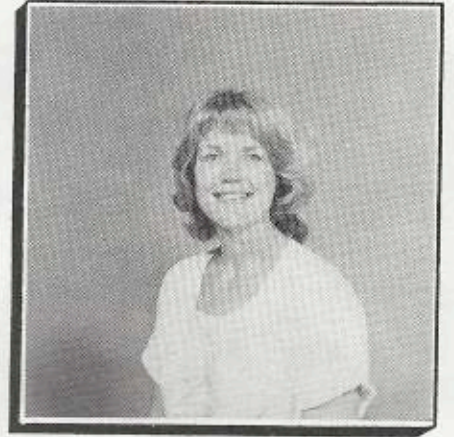
Rita is a happy wife and mother, happy teacher and a happy travel agent.

**SUSAN BLACKWELL-BROWN - "Essie Carmichael"**

"You Can't Take It With You" is the second MBCC production for Susan. Audiences saw her in "Never Say Goodbye" as a member of the Corps de Holiday Way. Although a relative neophyte to the community hall stage, she is no stranger to the theatre. Having appeared in countless senior high productions, Susan was even fortunate enough to be involved in a Pasadena Playhouse event where she appeared in MacBeth ... as a witch with the hiccups!

Balletically, her experience amounts to that of watching the Royal Ballet, once, dance "Swan Lake" at the Hollywood Bowl.

Susan is married and the mother of two wonderful children.



**JO and ROD TYLER - Producers**

Jo and Rod decided to try something new by producing an MBCC play. We expect them to be released from Camarillo by Christmas. Jo has been seen on stage at MBCC in "Applause," "Never Say Goodbye, and "Guys and Dolls." She also was choreographer for "Carnival."

This is Rod's first venture into the theatre as a participant. He brings with him talents in art and printing, and he's one heck of a golfer.

The Tylers own Minuteman Press in Westchester, and have two daughters ... Molly, 11 and Jesse, 5.



A WORD FROM THE MARINERS.....

Mariners would like to extend a warm welcome to all of you!

The Mariners Club is an organization of married couples seeking good times, friends, and fellowship. Although we are sponsored by Manhattan Beach Community Church, you need not be a church member to join Mariners. Further information can be obtained through the church office.

The benefits of producing a play are many. The funds raised by your support are perhaps the most visible product. This money is returned to the church and community through the various projects and charities that Mariners support.

But of at least equal importance is the spirit of group participation and accomplishment that is created. The members of our cast and crew span a wide cross section of our congregation and the surrounding area. The hours of practice and rehearsal that they donate are rewarded, at least partially, by the friendships made and the sense of pride shared. Those of you who have participated in an MBCC show understand this completely.

With these things in mind, relax, sit back, and enjoy the show!

Rick & Connie Hefner  
Skippers  
Mariner Express

Manhattan Beach Mall  
500 S. Sepulveda  
Manhattan Beach, Ca.  
Ph. 372-4929

Delicatessen  
Bar B Que  
Catering  
Sandwiches

**PICKLE  
BARREL  
DELI**

PAUL + BRIAN  
Diane & Bob Denny

AIR - STEAMSHIP - BUS - RAIL - HOTELS - TOURS

LADERA TRAVEL SERVICE, INC.  
AT SOUTH BAY

2041 ROSECRANS AVE., SUITE 103  
EL SEGUNDO, CALIF. 90248  
(213) 640-0527 (213) 772-1511

RITA J. KOCH  
SALES REPRESENTATIVE HOME (213) 376-6785



REALTOR®  
SELL  
EXCHANGE  
PURCHASE  
RENT

**KRIENKE REALTY**

1716 MANHATTAN BEACH BLVD.  
MANHATTAN BEACH, CALIF., 90266  
Phone (213) 376-7967



LOTS  
HOMES  
INVESTMENTS  
COMMERCIAL

*The office staff says—*

**CONGRATULATIONS**

*to THE CAST AND CREW AND ALL  
WHO HELPED WITH THE PRODUCTION*

*of "You Can't Take It with  
you"*



# PRODUCTION STAFF

Producers ..... Jo & Rod Tyler  
Director ..... Taylor Jay Thompson  
Assistant Director ..... Tenna Tucker  
Stage Managers ..... John & Carole Hugunin  
Props & Set Decoration ..... Carolyn Calland  
Maggie Garcia  
Set Design ..... Steve Norris  
Taylor Jay Thompson  
Set Construction ..... Jim Belt, Ron Koch,  
John Hugunin, Rod Tyler,  
Lyle Stoltenberg, Gene Ziegler  
Set Painting ..... Steve Norris, Donna Zoriki,  
Arlene Kishi, Tenna Tucker,  
Taylor Jay Thompson, Tim Kelley,  
Maggie Garcia, Rod Tyler,  
Molly Tyler, Jesse Tyler  
Costume Design ..... Sally Stowe  
Light & Sound Control ..... Mike Neary  
Donna Zoriki  
Make-up ..... DeAnne Johnson  
Carol Hitchcock  
Photography ..... Doug Carter  
Publicity ..... Diane Carter  
Program  
Cover Design ..... George Conde  
Advertising ..... Connie Sieber  
Patt Ambrose  
Patrons ..... Rick & Susi Farrell  
Tickets ..... Loretta Herft  
Connie & Rick Hefner  
Auditorium Set-up & Control ..... Phil Gingrich  
Refreshments ..... Adelphos  
Tim Dice  
Video ..... Graham Lewis  
Tom Bullard,  
Terry Welles

## TYPESETTING

*(With a difference)\**

- \* 18 years experience in type, design and print requirements
- \* Free layout and design consultation
- \* Attention to detail - including spelling and proofing

GRAPHICS ON 12077 W. Jefferson Blvd., LA (213) 306-4330



Printing FOR THE JOB YOU NEEDED YESTERDAY

**MINUTEMAN  
PRESS**

ROD & JO TYLER

6312 WEST 89TH ST.  
WESTCHESTER, (LAX) CA 90045

(213) 670-4522/23

*Enjoy ~ Spend Winter in the  
Sierras ~ Mammoth*

*Lakes*

*Furnished Condo*

*(\$40 PER NIGHT)*

**SKIING  
ICE SKATING  
HIKING  
SWIMMING HOT CREEK  
JACUZZI ~ SAUNA  
SCENIC GONDOLA RIDE  
BODIE GHOST TOWN  
CROSS COUNTRY SKIING  
7 MAMMOTH LAKES  
6 LAKES, SHORT HIKE  
9 LAKES 3-11 MI. HIKE**

*Ron Troupe*

*Res: 376-7544*

*Bus: 670-7500*

# SYNOPSIS

The scene is the home of Martin Vanderhof, 761  
Claremont, New York - just around the corner  
from Columbia University, but don't go looking for it.

## ACT I

### Scene 1

A Wednesday evening in early June

### Scene 2

Late that same night

### Scene 3

One week later

## INTERMISSION

## ACT II

### Scene 1

Immediately following

### Scene 2


The following day

*the* **slipt** *stitch*  
*yarns & needlecraft*



421 Main Street  
El Segundo, California  
322-6793

Certified Commercial Agent



**Allstate®**

Call,  
**FLOYD W. WOOD**  
Senior Account Agent  
8318 West 89th Street  
Westchester, California 90045  
Bus: (213) 670-3047  
(213) 776-1246

TELEPHONE: (213) 376-3264


---

**BONDED INCOME TAX CO.**

---

**FRANK O'LEARY**  
INCOME TAX CONSULTANT


P.O. Box 7000-330  
REDONDO BEACH, CA 90277



**RICHARD YODER**  
REGISTERED REPRESENTATIVE

**AMERICAN PACIFIC SECURITIES CORPORATION**  
23717 HAWTHORNE BOULEVARD, SUITE 206-TORRANCE, CALIFORNIA 90505  
213/772-6529 213/373-7351

*Bay Shores*  
*Mental*  
*Health Group*



**Graham Lewis, M.S.**  
Psychotherapy and Counseling

901 Manhattan Beach Boulevard  
Manhattan Beach, CA 90266

Hours by Appt.  
(213) 546-5711  
After Hours 316-0811

**doug carter**

**doug carter**  
photographer

**PHOTOGRAPHY**  
(213) 379-6403

1018 TENTH ST. MANHATTAN BEACH, CALIF. 90266

commercial ■ weddings ■ parties ■ publicity

# PATRONS

Jim & Evelyn Belt	George & Barbara Hammer	Bill & Ruth Purdon
Dave & Bertha Bradburn	Wendell & Madelyn Harter	Bob Raban
Barney & Lori Brogan	Guy & Judy Hatlie	Dick & Ann Rose
Merrick & Susan Brown	Paul & Ardath Hayes	Ray & Andrea Russell
Jimi & Karin Canon	Rick & Connie Hefner	Eric Shaefer
Bob & Marge Campbell	Sam & Carol Hitchcock	Bill & Connie Sieber
Steve & Kathy Campbell	Liss Jackson	Mr. and Mrs. Michael Siegel and Family
Frank & Evelyn Cochran	Ernie & Doris Johnson	Paul & Sue Sterba
Jim & Pat Crane	Pat & DeAnne Johnson	Lyle & Pauline Stoltenberg
Vic & Jan Cravello	Mark & Debbie Klempa	Charlie, Sally & Tim Stowe
Rene & Anne Doublier	Ron & Rita Koch	Pat & Christine Sullivan
Tom & Claudia Downs	Oliver & Carol Krienke	Walt & Wanda Taylor
Jerry & Carol Dutcher	Graham & Bunny Lewis	Taylor Thompson
J.C. & Pat Edwards	Chuck & Lillian Lunt	Ron & Shiela Troupe
Jeremy & Louann Evans	John & Linda Mack	Rod & Jo Tyler
Rick & Susi Farrell	Don & Sandi MacKenzie	Bob & Elaine Weiner
Jerry & Donna Foote	John & Mary McIntyre	Al & Lynn Wherry
Bruce & Sandi Forbes	April Bogert-Neary	Bill & Suzanne Young
Jim & Ann Gere	Bill & JoAnn Park	



HELLO MARINERS & OTHER FRIENDS....

BEST WISHES!

FROM

"THE HYPERION OUTFALL SERENADERS"

THE CHARMING, TALENTED, ATTRACTIVE GROUP\* THAT  
IS THE OFFICIAL BAND OF MANHATTAN BEACH.

\*Freeman's Law: When you pay for an ad, be nice to yourself.